



**Note: This product is distributed on a 'try-before-you-buy' basis. All features described in this documentation are enabled. The unregistered version will be added a watermark on our result quizzer pages.**

## About A-PDF Quizzer

If you are teacher, do you want to create and present your tests to your students both on-ground and online learning environments with ease?

If you are a website designer, are you bothering on the problem of how to engage your visitors and drive up traffic of your website?

If you see a fun quiz on some magazine or book, will you publish online to share with your friends on your own blog or website?

To create online test and exam, drive up traffic of website (most people take the quiz to spend some time on your site and will be more willing to browse it further), share funny quizzes online just for fun, A-PDF Quizzer will help you generate a quiz in the easiest way.

**A-PDF Quizzer** is flexible and effective quiz maker software that helps to build multiple types quizzes and publish online. The powerful A-PDF Quizzer provides different quiz types for you to choose, True/False, Multiple Choice, Multiple Response and Fill in the Blank etc. With using A-PDF Quizzer, you are also able to add images for each question, and publish the created test on your website instantly.

A-PDF Quizzer provides wizard-like interfaces for you to create quizzes and services with ease, and it doesn't require any technique knowledge. All you need to do is just presenting your questions and answers directly.

With using A-PDF Quizzer, you can create below types of quizzes with ease:

- ✓ Training tests
- ✓ Education exams
- ✓ Fun quizzes
- ✓ Analytic surveys
- ✓ Secure questions
- ✓ Automatic certificates
- ✓ ...



### **Professional features include:**

- Easy Create quizzes with friendly-to-use interfaces.
- Provide different quiz types: True/False, Multiple Choice, Multiple Response, Fill in the Blank, Word Bank, Matching, Hot Spot, Matching Drop Down, Sequence Drag and Drop, etc.
- Add images, videos, equations, sounds for each question.
- Use Tab Key to enter next choices.
- Define quiz information about quiz title, author details.
- Set passing rate for quizzes.
- Define point, right and wrong tips for every quiz.
- Link to some webpage after finishing the quiz in blank/self/parent/top page.
- Change language for quizzes.
- Choose template from default build-in types.
- Apply flash on quiz pages, provide many kinds of flash for you to use directly.
- Customize template with setting quiz font, backgrounds, tool bar info and Flash info.
- Preview defined quizzes.
- Save project for later continue editing work.
- Publish created quiz with outputting Flash, Zip, Exe.
- Allow zoom in the inserted images by magnifier tool.
- Enable print out created quiz pages while testing.
- View test result after submitting instantly.
- Check answers with reviewing feedback.





## 1. New Project



Click "New Project" icon to create a new project and define title for your quiz:

**New Project**

Please enter the quiz title, then click on the OK button

Quiz title:

## 2. Present Questions

After setting new quiz project title and clicking "Ok", you will enter into the questions edit interfaces:

**New Question**

True/False

Multiple Choice

Multiple Response

Fill in the Blank

Word Bank

Matching

Hot Spot

Matching Drop Down

Sequence Drag and Drop

**The largest planet in our solar system is Jupiter?**

True

False

**True/False**

True/False is a graded question that requires the user to select the single correct choice from two choices. It is usually written in the form of a statement that is either true or false

Click OK to add a True/False question



There are nine types of questions you can add: True/False, Multiple Choice, Multiple Response, Fill in the Blank, Word Bank, Matching, Hot Spot, Matching Drop Down, Sequence Drag and Drop.

## (1) True/False

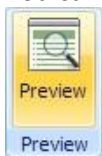
True/False is a graded question that requires the user to select the single correct choice from two choices. It is usually written in the form of a statement that is either true or false. The True/False questions can be edited in below interface:

NO.	Correct	Choice
A	<input checked="" type="radio"/>	True
B	<input type="radio"/>	False

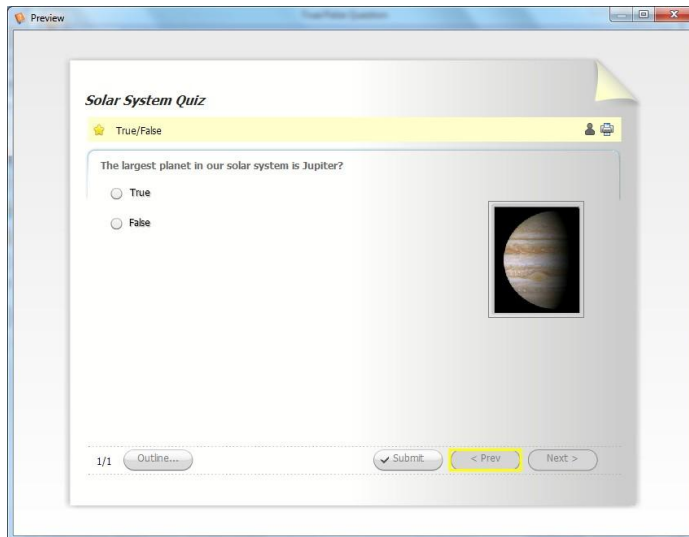
	Feedback	Point
Correct	That is right! You selected the correct response.	10
Incorrect	You did not select the correct response.	0

Define question (you can click Tab Key to Enter the next choice), correct choice, right and wrong point/tips (which will be shown while checking "Review Feedback").

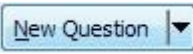
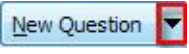
You can add image, video, equation and sound to the question as required, and you can click "Preview" icon



to view defined question as below interface shows:

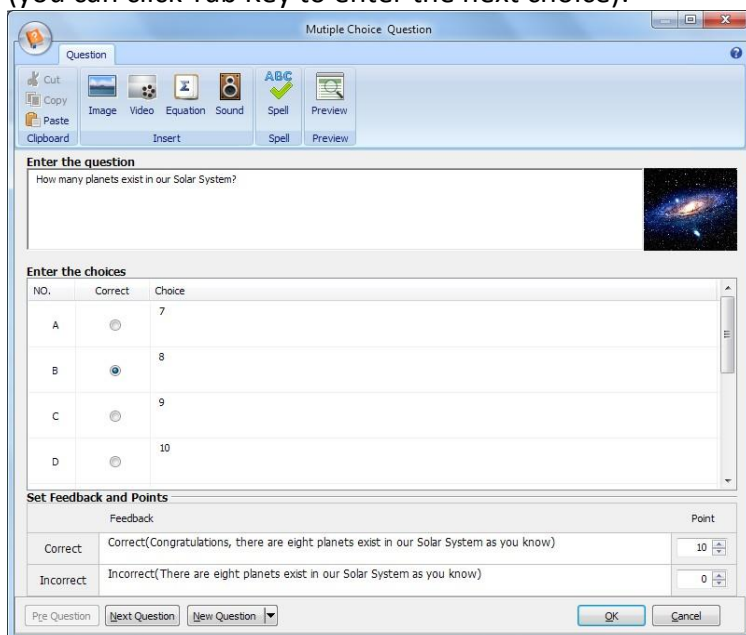


When you preview or your quiz visitors can click image to view the full size image.

You can click "New Question" button  to create next True or False question, or directly click drag down button beside  to choose question type and create new questions directly.

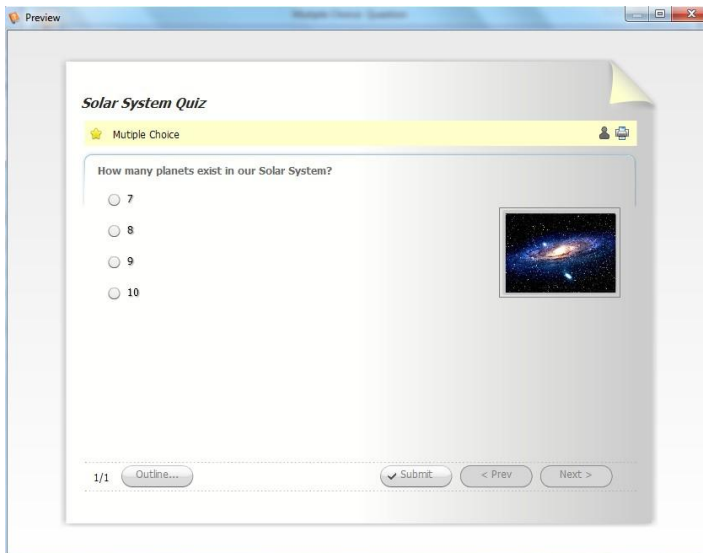
## (2) Multiple Choice

Multiple Choice is graded question that requires the user to select the single correct choice from a maximum of 10 possible choices. The Multiple Choice question define interface is as below shows (you can click Tab Key to enter the next choice):



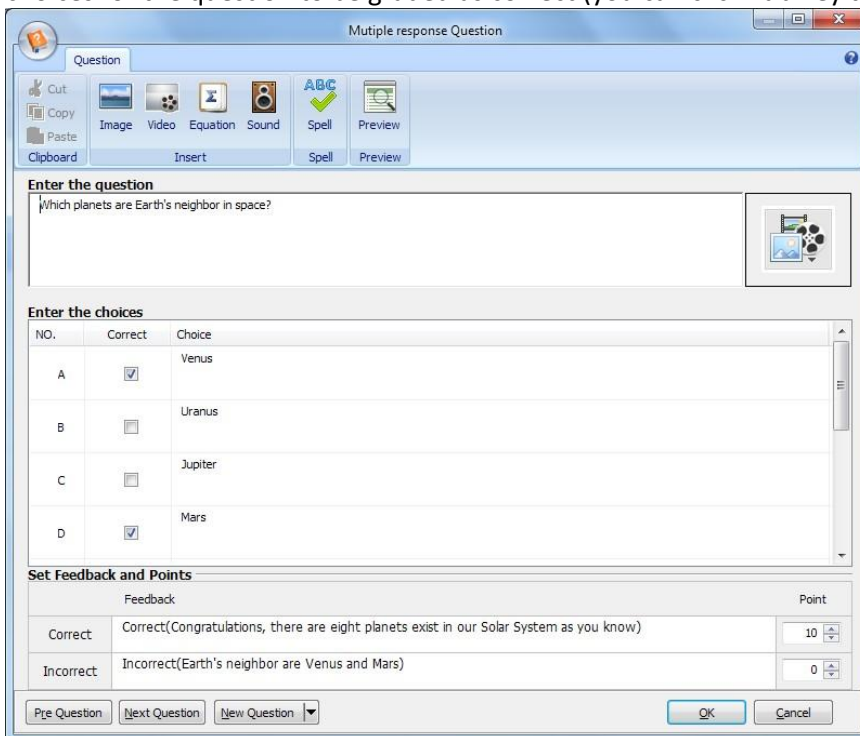


Preview as below shows:



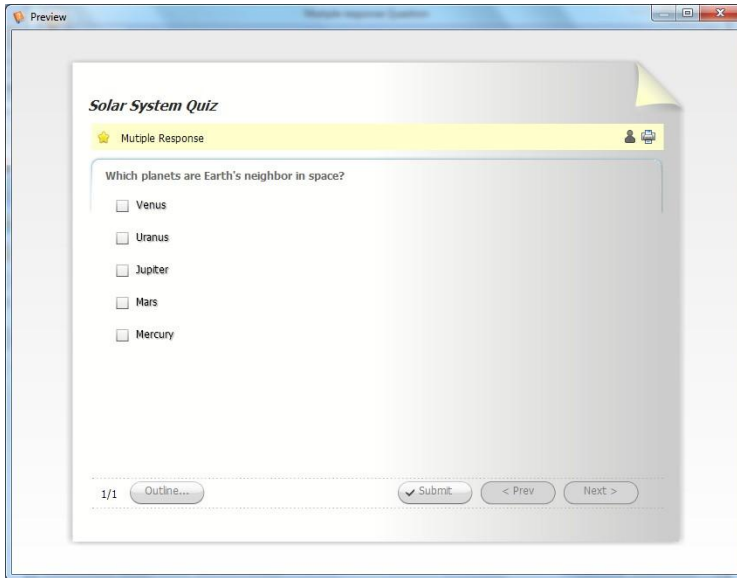
### (3) Multiple Response

Multiple Response is a graded question that requires the user to select all of the correct choices from a maximum of 10 possible choices. Any number of choices can be correct, and the user must select all correct choices for the question to be graded as correct (you can click Tab Key to enter the next choice).



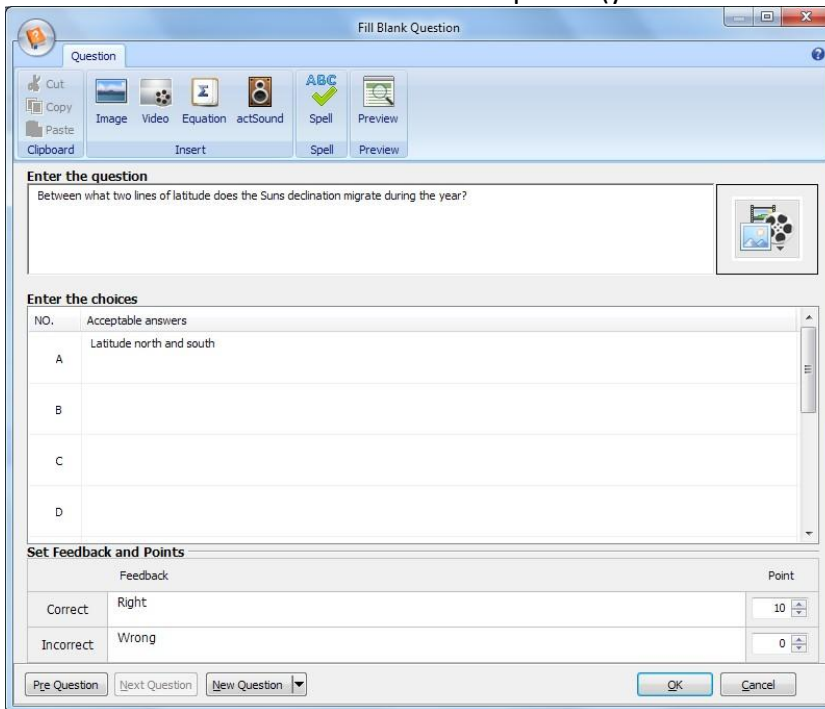


Preview effect:



#### (4) Fill in the Blank

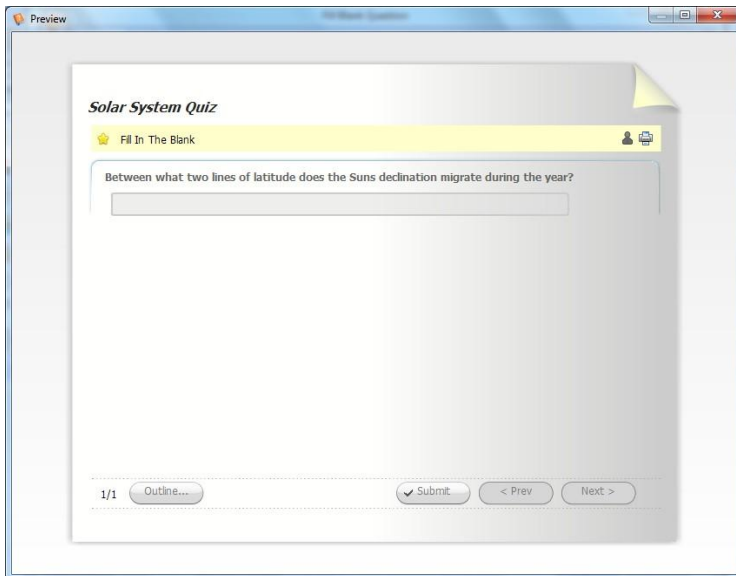
Fill in the Blank is a graded question that requires the user to enter the answer in the blank field. There is only one correct answer to this type of question, although up to 10 answers can be entered to account for variations in response (you can click Tab Key to Enter the next choice).





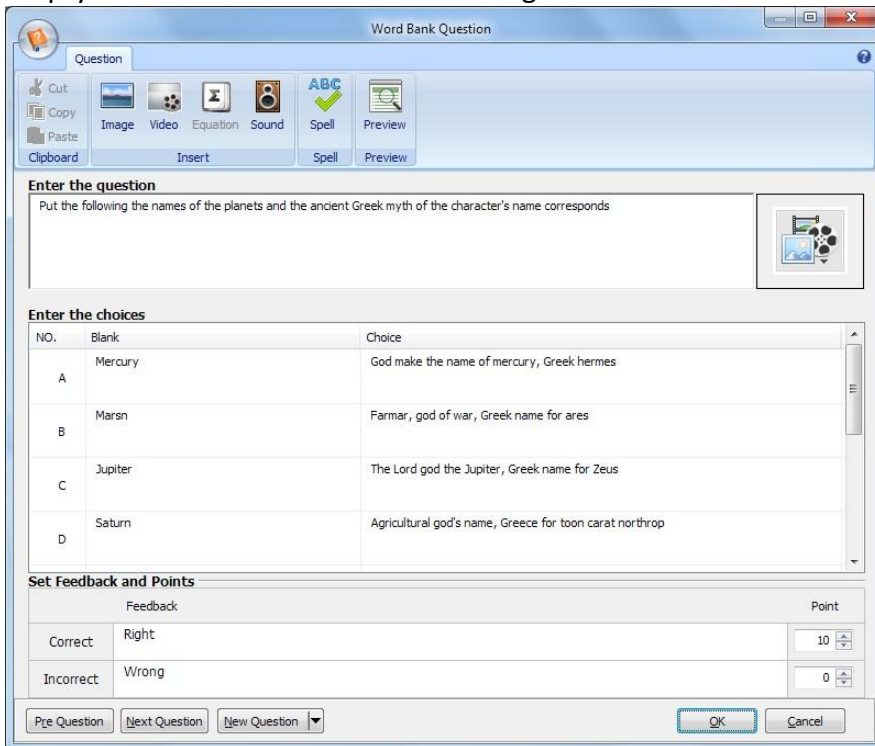


Preview as below:



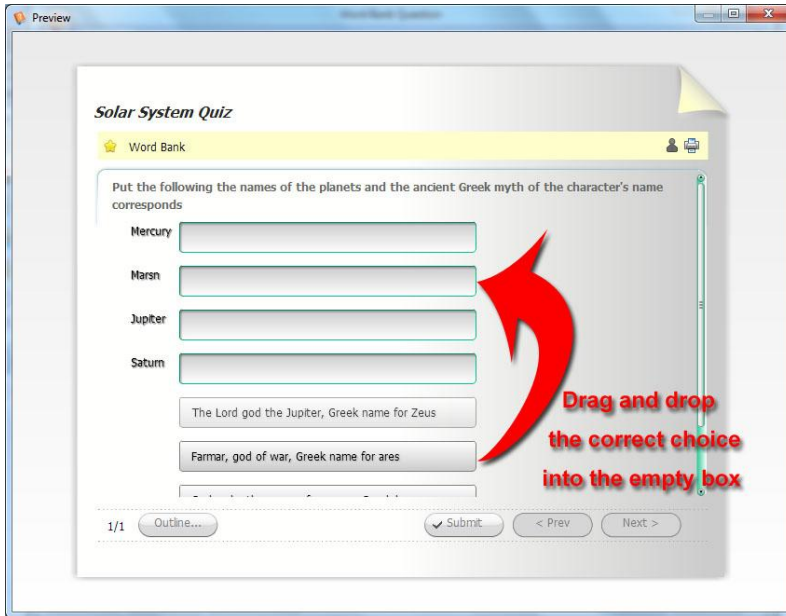
### (5) Word Bank

Word Bank is a graded question that requires the user to drag and drop the correct choice into the empty box. The user must select the single correct choice from a maximum of 10 possible choices.



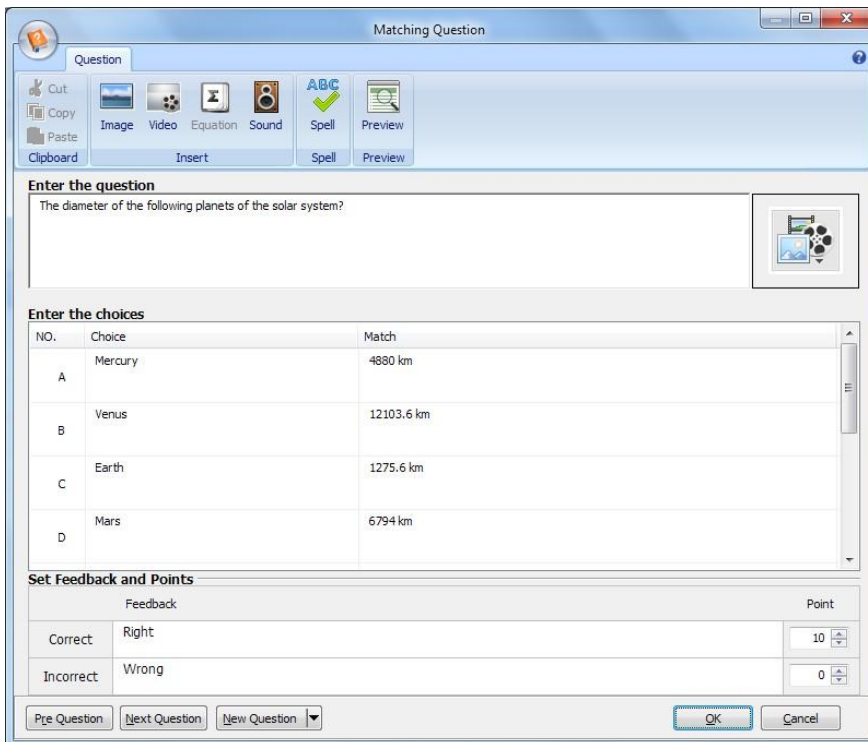


**Preview:**



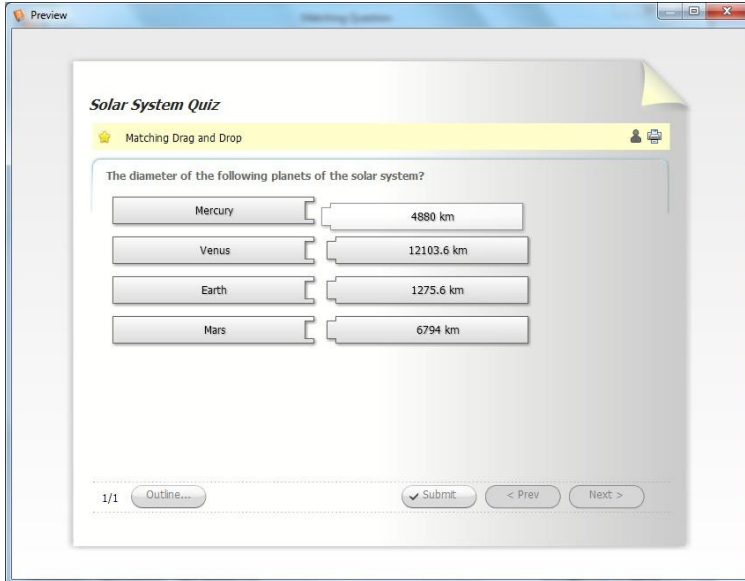
**(6) Matching**

Match each statement with the proper term. Make your selection for each match to the left of the statement.



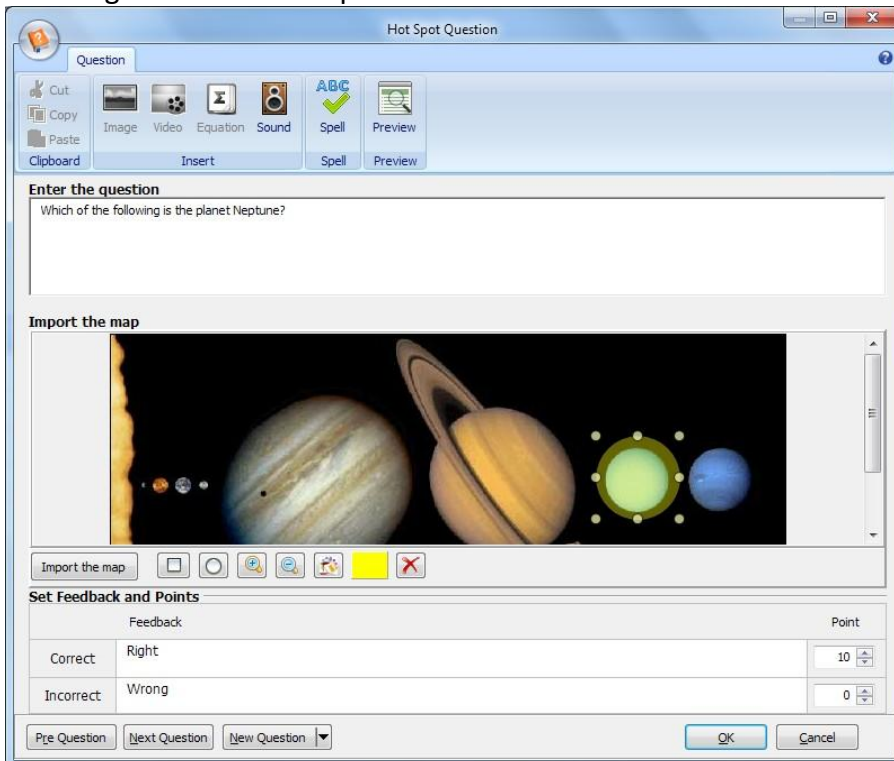


Users just click on an item on the right and drag it to the corresponding item on the left, preview:



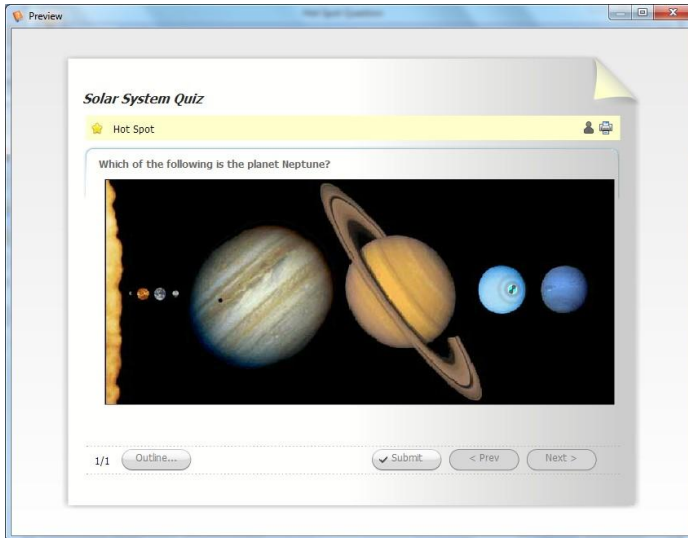
### (7) Hot Spot

A hotspot question is a question that requires the quiz taker to click on the correct areas within the image to answer the question.



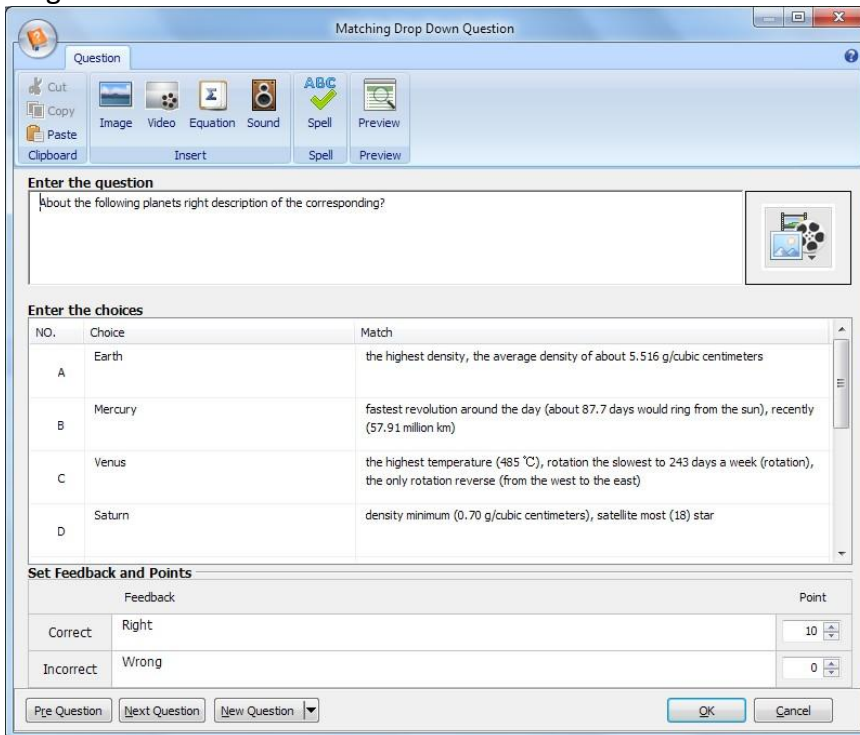


**Preview:**



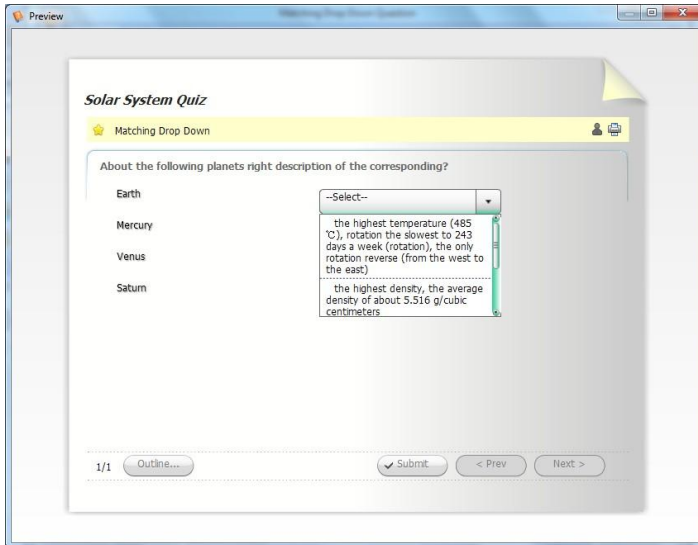
**(8) Matching Drop Down**

Matching Drop-down is a graded question that requires the user to select items from drop-down menus to match items in the first column. There is a maximum of 10 matching pairs. All items in the match column must correctly correspond to all items in the choice column for the question to be graded as correct.



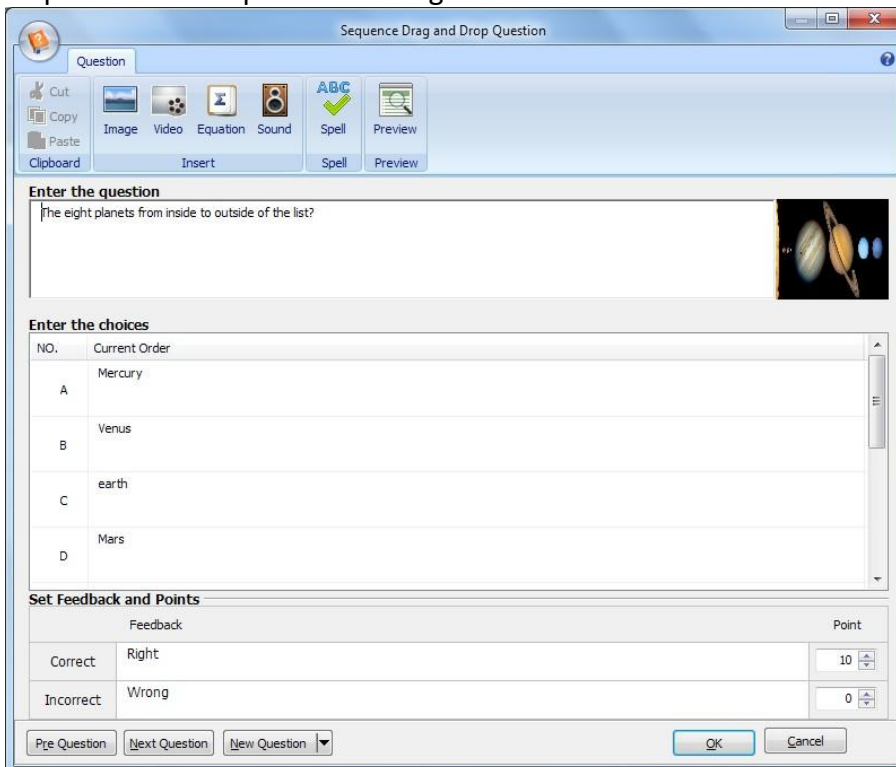


**Preview:**



**(9) Sequence Drag and Drop**

Sequence Drag and Drop is a graded question that requires the user to drag and drop items to arrange in sequence. There is a maximum of 10 sequence items. All items must be in the proper sequence for the question to be graded as correct.





Preview:



### 3. Publish Settings

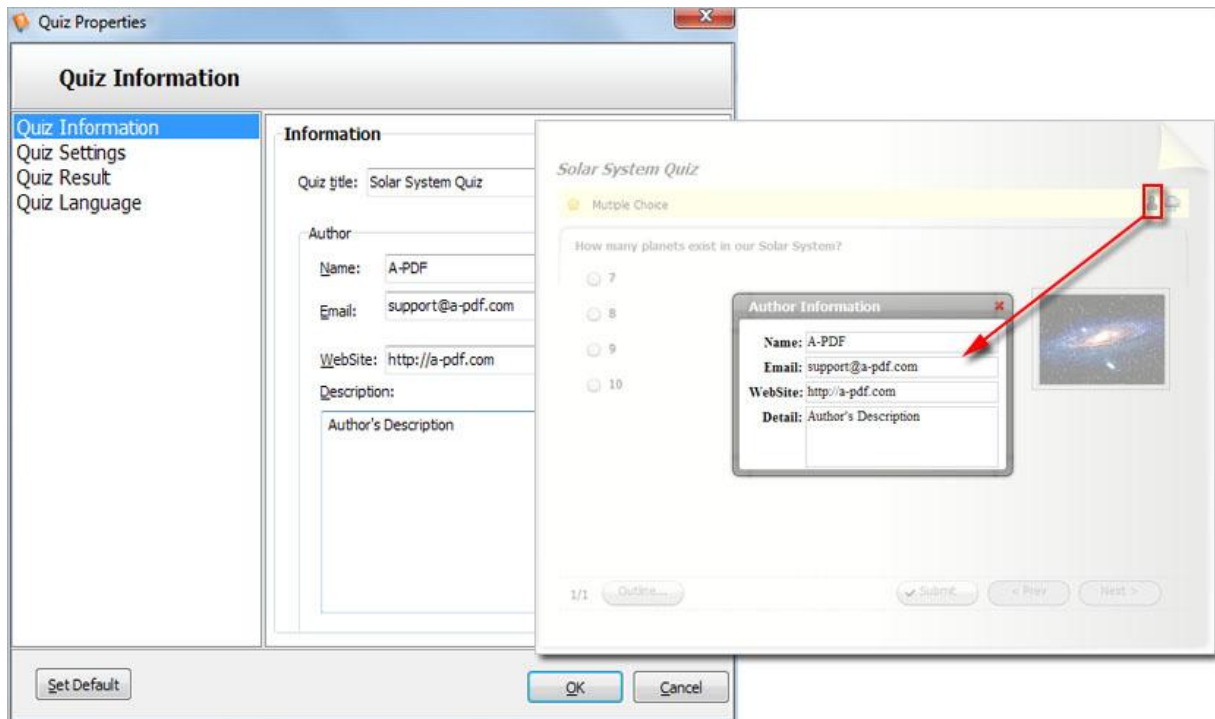
#### (1) Quiz Properties



Before publishing, you can click "Quiz Properties" button to define quiz details:

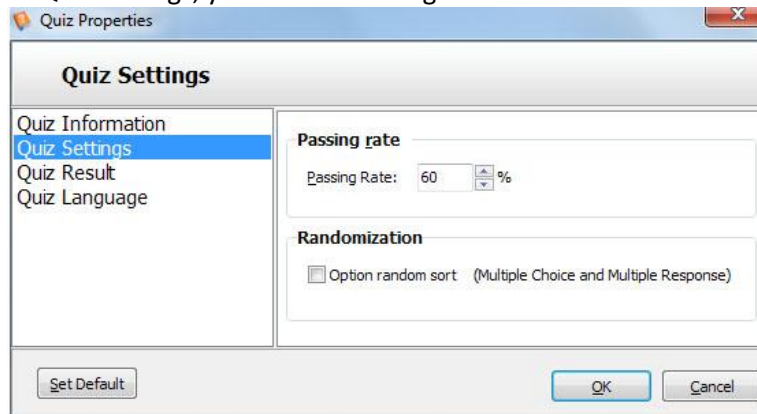
##### i. Quiz Information

You can set Quiz title, Author name, email, website and description:



## ii. Quiz Settings

In Quiz Settings, you can set Passing Rate and Randomization:



## iii. Quiz Result

After completing answering the quiz questions, you can provide different feedbacks to pass or fail users, enable the participants to go to some web page in blank or parent page (such as your home page), send result to users. Define email settings as below shows, use SMTP if your website server isn't Linux system, and after setting STMP details, you can click "Connection test" to check the settings correct or not:





### Send e-mail setting

Send results to the Specified e-mail address

Subject:

Quiz Reslut

To the e-mail:

alice@a-pdf.com

Use mail server(SMTP)

SMTP Setting

Send mail server (SMTP):

smtp.gmail.com

Send mail server port:

25

Send E-mail:

alice.apdf@gmail.com

Send E-mail password:

••••••••••

Save

Connection test

Should noted that only you publish your quiz online, and you site server supports PHP script, then after people complete the quiz, the result email will be sent to them automatically.

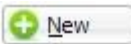
### iv. Quiz Language

While using Quizzer, you can define language to show your quiz, the message button, questions types, tips, author info, etc:

Key	Value
Select Language:	English
Not supported XML version	Configuration file may be generated by
Unknow error	Unknow error,error code:
Not answered all question	Some questions have not been answer
Next button caption	Next >
Previous button caption	< Prev
Question submit button cap	Submit
Question default descrip	Question
Message title	Information
Confirm message button	Yes,No
Yes button	Yes
No button	No
User score text	Your score:
Total score text	Total score:
Pass score text	Pass score:
Passed text	Congratulations, you have passed.
Not passed text	Sorry, you have not passed.
Review button caption	Review
Finish button caption	Finish
Not supported XML version	





1. Click the button  and define name for the new language:



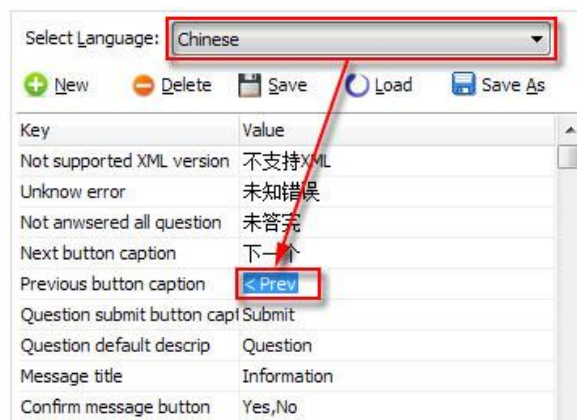
**New Language**

Language Name:

Copy From:

Click "OK" to save the new language in the list;

2. Select Language as your new added kind, and then just input new language in the "Value" panel:



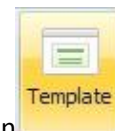
Select Language:

Key	Value
Not supported XML version	不支持XML
Unknown error	未知错误
Not answered all question	未答完
Next button caption	下一个
Previous button caption	<input type="button" value=" &lt; Prev"/>
Question submit button caption	Submit
Question default description	Question
Message title	Information
Confirm message button	Yes,No

3. At last, click "Save" button and click "Ok" to apply your new edited language as the quiz language.

## (2) Quiz Template

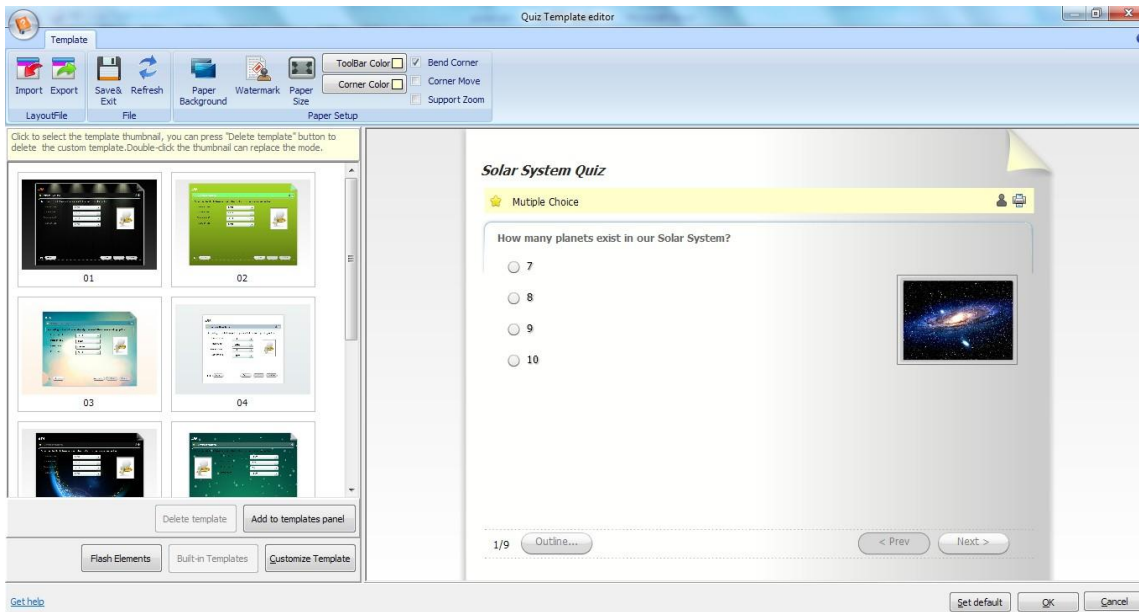
In Quizzer, you can choose template to use from default build-in types, apply flash on quiz pages, the program provides many kinds of flash for you to use directly. Besides, you can also customize template with



setting quiz font, backgrounds, tool bar info and Flash info. Just click "Template" button to enter into quiz layout setting interface:



## User Documentation



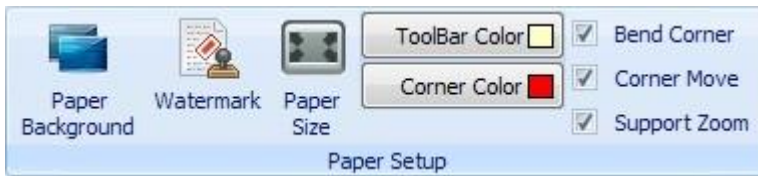
Export

Click this icon is to save current settings for later uses;

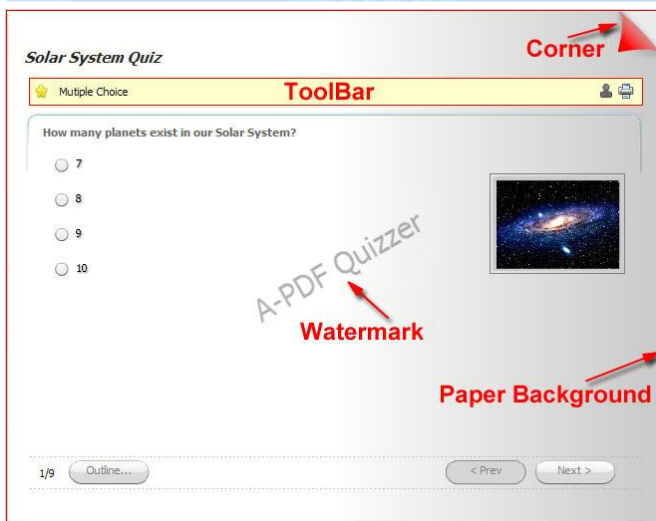


Import

Click this icon is to import stored setting file at once;



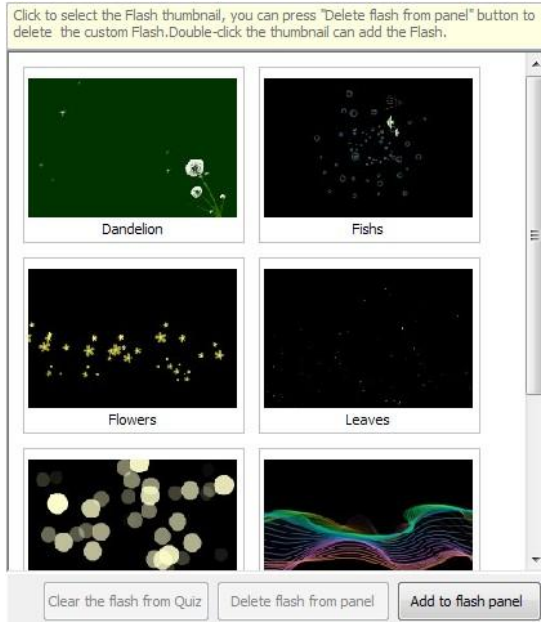
Paper, watermark, toolbar color, corner:





### i. Flash Elements

You can apply flash to use in background of your quiz, no matter upon the paper or below the paper:



### ii. Build-in Templates

There are different styles templates provides in the software, you can choose any one to use in your quiz directly, just choose the one you wanted and double-click to apply.

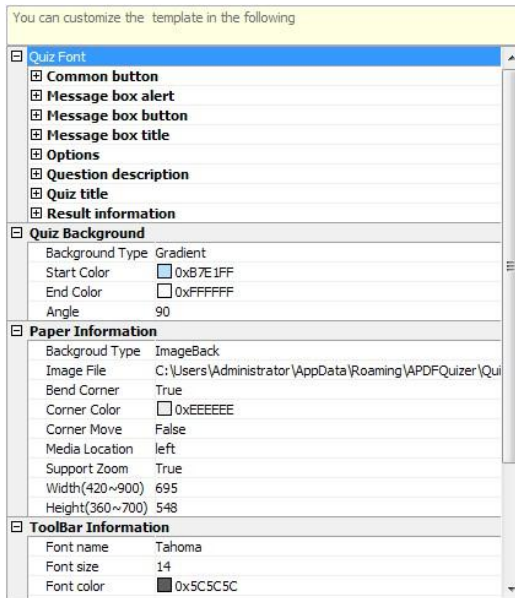


You can also set your own style template, click button "Add to templates panel" to add your own template in this choose window, and then you can use directly without re-design later.



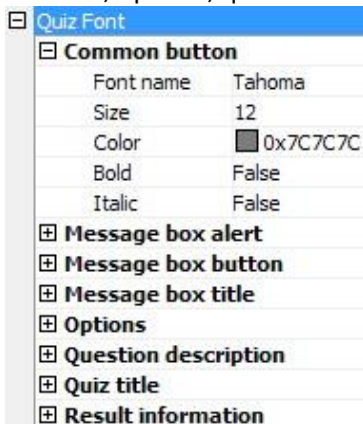
### iii. Customize Template:

If you want to define your own settings for template, you can set quiz font, background, paper, toolbar, flash in the customize window as below shows:



#### a. Quiz Font

You can define font type, font color, font size for button, message box alert, message box button, message box title, options, question description, quiz title and result info:

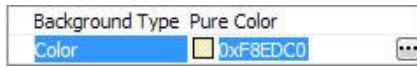


#### b. Quiz Background

In "Quiz Background" panel, you can choose Background Type as "Pure Color", "Gradient" and "Image":

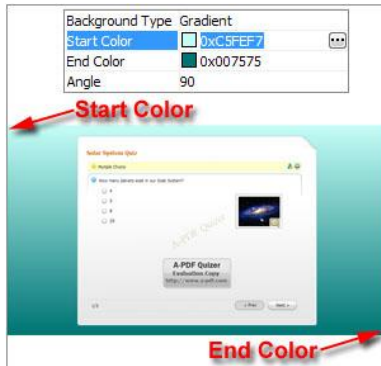
1). Pure Color

Choose "Background Type->Pure Color", and then set "Color" by clicking "..." icon:



2). Gradient Color

Choose "Background Type->Gradient", set "Start Color" and "End Color", Angle is the angle between the two colors:



3). Image

Just select "Background Type->Image", and choose "Image File":



**c. Paper Information:**

Define details for quiz paper, you can also set paper background as Pure color, gradient color or image:

<input checked="" type="checkbox"/>	<b>Paper Information</b>
Background Type	ImageBack
Image File	C:\Users\Administrator\AppData\Roaming\APDFQuizzer\QuizSt
Bend Corner	True
Corner Color	<input type="checkbox"/> 0xEEEEEE
Corner Move	False
Media Location	left
Support Zoom	True
Width(420~900)	695
Height(360~700)	548

**d. ToolBar Information:**

Set font type, size, color, color, transparency, visible or not for toolbar:



ToolBar Information	
Font name	Tahoma
Font size	14
Font color	0x5C5C5C
Bold	True
Italic	False
Transparency(%)	100
Backgroud Color	0xF4F4F4
Visible	True

### *e. External Flash Information*

You can add your own flash to show upon or below the quiz paper, just set the flash path to use, then you can back to "Flash Elements" window to add the flash as default one to use later, without importing again.

External Flash Information	
Position	Back
Flash Path	E:\Useful Documents\Images\flashes\falling star.swf

### **iv. Quiz Watermark:**



Click "Watermark" button to enter into watermark window to set "Image" or "Text" watermark:

### *a. Image Watermark*

Select "Image watermark" option, click "Select a picture" to choose image from your computer. You can set the watermark "Stretch" as AutoSize, 500%, 200%, 150%, 100% or 50%, also set image transparency by setting "Alpha" value. Then click "Apply" to preview the watermark effect, click "OK" to save the watermark:

Watermark Type

No watermark     Image watermark     Text watermark

---

C:\Users\Administrator\Desktop\Ne... \5jlJX7V7bZ.jpg

Stretch: AutoSize

Alpha: 30





### ***b. Text Watermark***

Select "Text watermark" option, then you can define Watermark words, fonts, format and alpha. At last click "Apply" to preview the watermark effect, click "OK" to save the watermark:

## **4. Publish Modes**



After defining all questions and template, you can click "Preview" to check your questions and settings, and then click "Publish" icon to choose output format for your created quiz: HTML, ZIP or EXE.

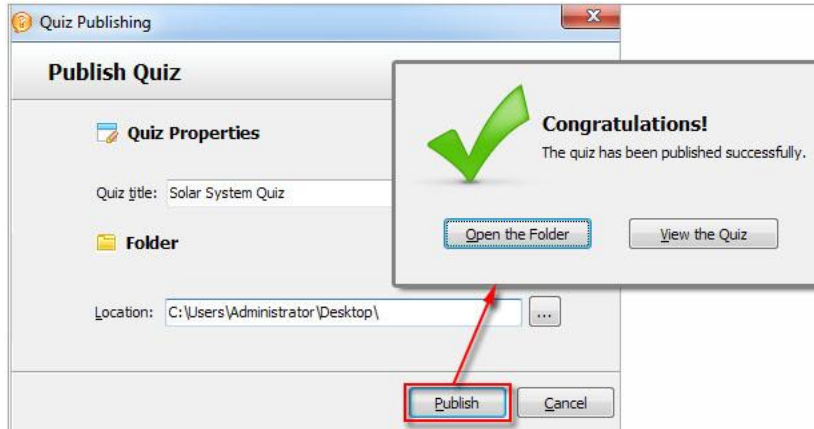
Web allows you to upload to a website to be viewed online.

Zip allows you to send to others by email to be viewed on their computer.

EXE helps to integrate all output files into a single execute file to view instantly.



Choose a format, and then enter into output path define window (you can also define icon for EXE Quiz):



After publishing, you will get there related files in the HTML output path or ZIP folder: HTML, data (folder) ,PHP and SWF. If you want to show the Flash file on your website, make sure upload all these files under a same FTP path.

## At Last

With A-PDF Quizzer, you can engage your website visitors, share fun quizzes with images on your blog or twitter, test your students online and so on.

Start to enjoy the powerful and interesting A-PDF Quizzer now!

For more information: <http://www.a-pdf.com>