

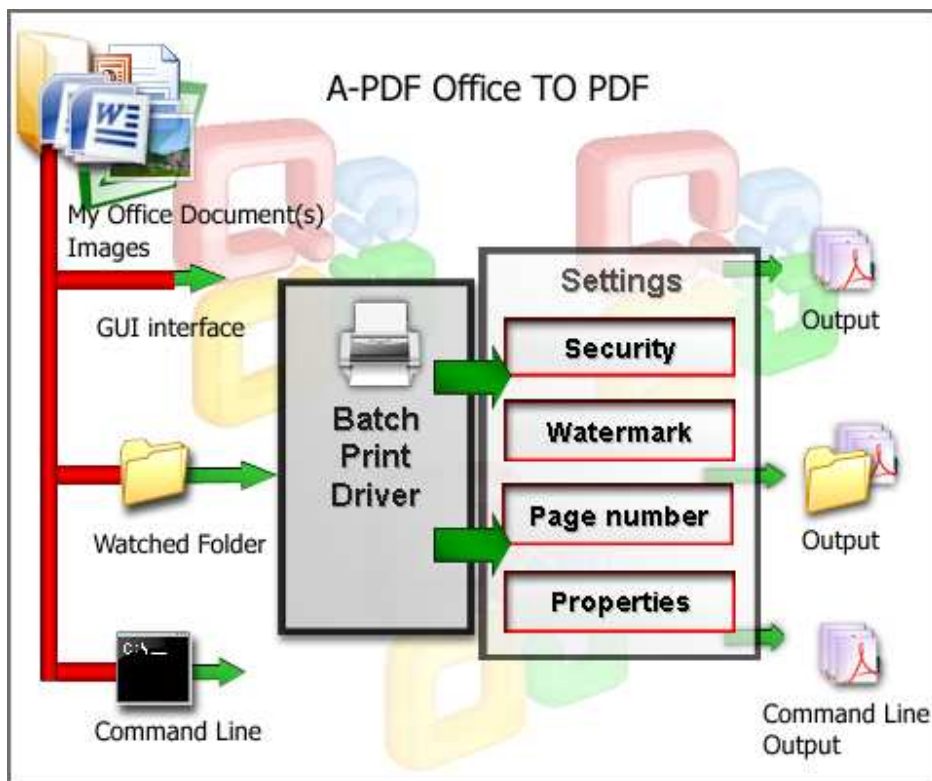


Note: This product is distributed on a 'try-before-you-buy' basis. All features described in this documentation are enabled. The registered version does not insert a watermark in your generated pdf documents.

About A-PDF Office to PDF

A-PDF Office to PDF is a fast, affordable way to batch converts Microsoft Office documents (Word, Excel, InfoPath, Publisher, Visio and PowerPoint) and Images into professional-quality documents in the popular PDF file format. Its easy-to-use interface allows you to batch create PDF files which can be viewed on any computer with a PDF viewer. A-PDF Office to PDF supports font embedding, adding watermark, security, page number and multi-language.

A-PDF Office to PDF Running in GUI and keeps running in batch mode (as command-line utility), **a command line version is included also.**

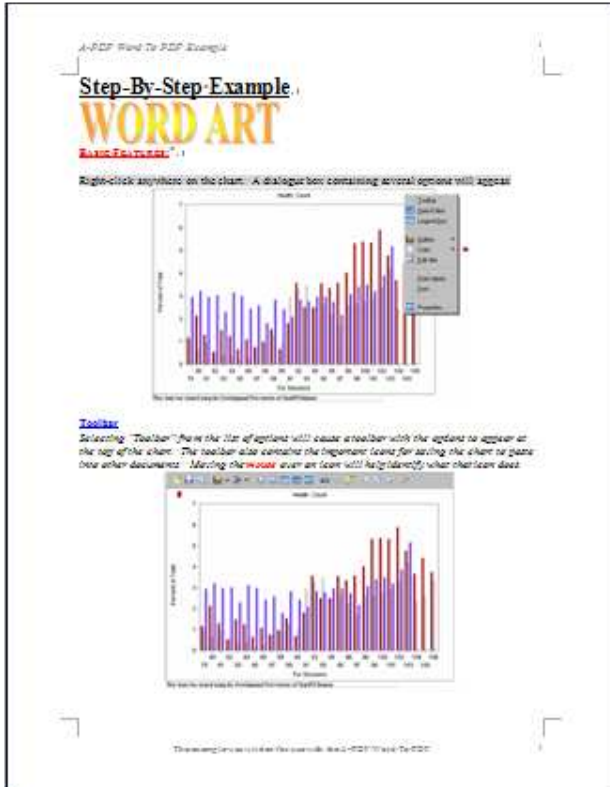




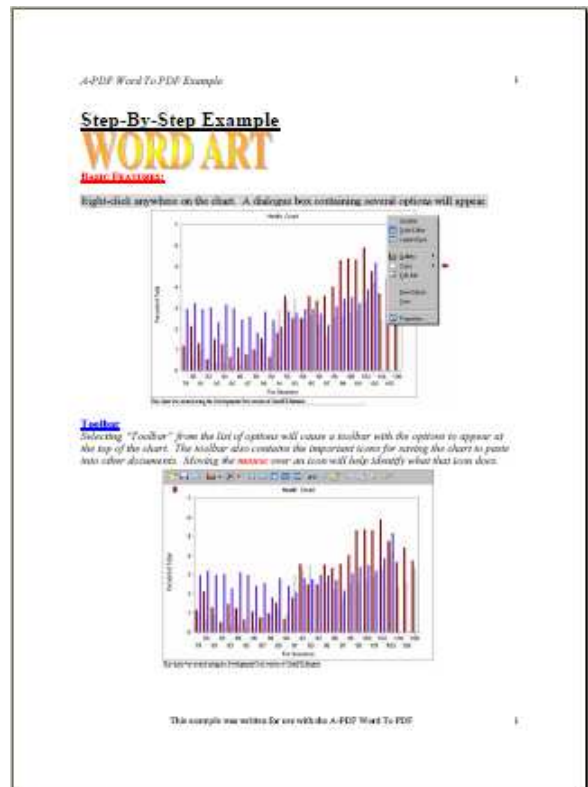
PDF Office to PDF utility Convert Office to Searchable PDF

User Documentation

Example:



MS WORD DOC



Converted PDF



Example: MS PowerPoint Presentation

Alcohol, Drug and Mental Health Comorbidity on the Texas-Mexico Border
Lynn Wallisch and Richard Spence
University of Texas at Austin, School of Social Work, Addiction Research Institute

Introduction:
In a representative sample of adults living in residential households on the Texas-Mexico border, 12.9% had DSM-IV defined problems of alcohol abuse or dependence. Some 5.6% had alcohol problems only, another 22% had alcohol problems and also used illicit drugs, and 3.9% had alcohol problems and problems with gambling and/or mental health. This study compares characteristics and treatment utilization and behavior among these three groups. Comorbidity is expected to be associated with acculturation, with substance problem severity, and with increased likelihood of seeking services.

Map:
Texas Border Region

Acculturation
based on ARBMA-II

	Alcohol only	Alcohol + Drugs	Alcohol + MH/G or Gambling
	%	%	%
Male	80.2	83.4	70.6
Age			
18-24	29.6	50.1	23.0
25-34	29.0	44.6	36.5
35+	41.3	5.2	40.5
Education			
< HS grad	34.7	19.9	37.4
HS grad	32.0	34.7	27.0
Beyond HS	33.3	45.4	35.6
Income			
< \$20 K	64.3	37.2	66.1
\$20 - \$40 K	23.5	28.4	36.4
> \$40 K	12.2	34.4	8.5



Converted PDF

Alcohol, Drug and Mental Health Comorbidity on the Texas-Mexico Border
Lynn Wallisch and Richard Spence
University of Texas at Austin, School of Social Work, Addiction Research Institute

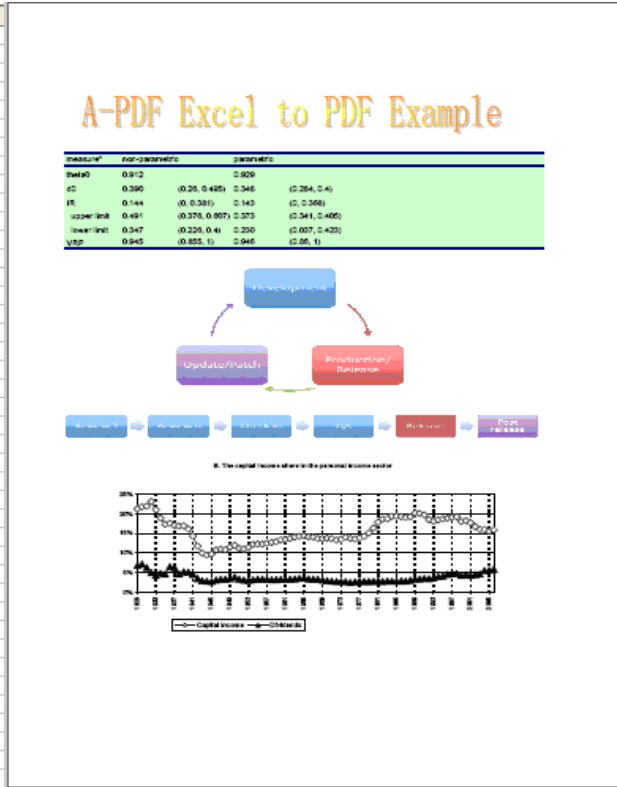
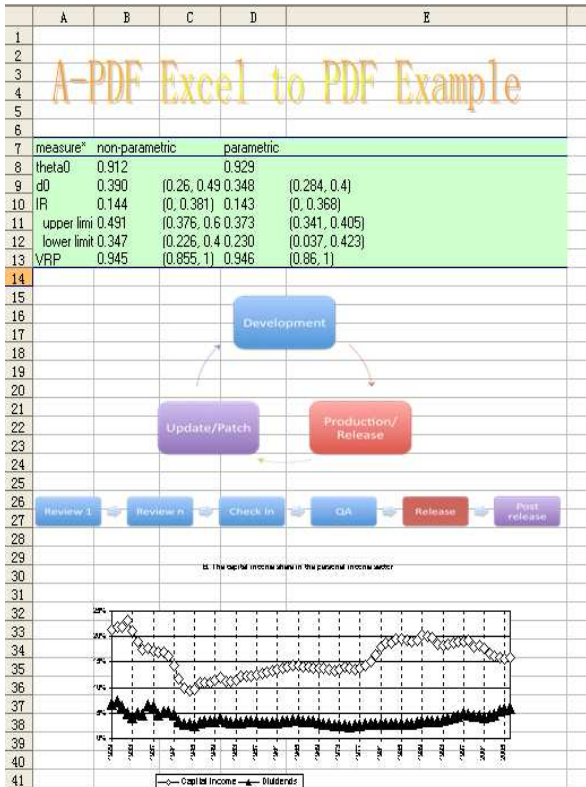
Introduction:
In a representative sample of adults living in residential households on the Texas-Mexico border, 12.9% had DSM-IV defined problems of alcohol abuse or dependence. Some 5.6% had alcohol problems only, another 7.8% had alcohol problems and also used illicit drugs, and 3.5% had alcohol problems and problems with gambling and/or mental health. This study compares characteristics and treatment attitudes and behaviors among these three groups. Comorbidity is expected to be associated with acculturation, with substance problem severity, and with increased likelihood of seeking services.

Map
Texas Border Region

Acculturation based on ARSMA-II

	Alcohol only n=30	Alcohol + Drugs n=33	Alcohol + MH or Gambling n=31
Male	83.3	83.3	70.6
Age			
18-24	26.7	30.3	29.0
25-34	26.7	45.5	38.7
35+	46.7	24.2	32.3
Education			
<HS grad	33.3	30.3	38.7
HS grad	33.3	36.4	27.0
Beyond HS	33.3	33.3	34.3
Income			
< \$20 K	66.7	39.7	58.1
\$20 - \$30 K	23.3	24.2	19.4
> \$30 K	10.0	36.5	22.5

Example:



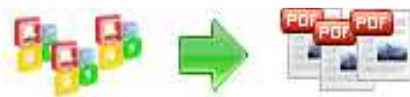
MS Excel

Converted PDF

A-PDF Office to PDF lets you instantly convert Microsoft Office documents into fully-formatted and professional-quality PDF file format. Support Microsoft Office 97, 2000, XP or higher.

A-PDF Office to PDF retains the layout of the original Doc document, and it supports all PDF file settings, such as PDF Compatibility, Auto-Rotate, Resolution, Compress settings of PDF document, Colors settings of PDF document, Fonts settings of PDF document.

Simply drag and drop. Easily **batch** converts Microsoft Office documents into PDFs from your documents.



Feature

- **Batch**
Converting Microsoft Office documents into PDF normal files couldn't be any easier. Simply Drag the DOC files to the file list which you want to convert into PDF file and click the "Convert to PDF And Save as" button, A-PDF Office to PDF quickly re-creates your DOC file as a fully formatted PDF files.
- **Fast**
Get the job done in seconds or minutes, not hours or days. A-PDF Office to PDF eliminates the need to re-key and re-format PDF documents, saving you both time and money.
- **Accurate**
You will be amazed at the results you get from Office to PDF Converter. It accurately retains the layout of the original Doc file. Converts text in over 100 languages and separates graphics from tables and text.
- **Powerful.**
Now you can do more than view PDF files. Document Format (PDF) is the fact standard for the secure and reliable distribution and exchange of electronic documents and forms around the world, and now you can convert any Ms Office documents into professional-quality PDF file format only by one click.

A-PDF Office to PDF does NOT require Adobe Acrobat, and produces documents compatible with Adobe Acrobat Reader Version 5 and above.



Before use A-PDF Office to PDF, Microsoft Office 97 or higher Version must be installed.



PDF Office to PDF utility Convert Office to Searchable PDF

User Documentation

Using A-PDF Office to PDF

A-PDF Office to PDF can be started either by launching the application via a desktop shortcut, or directly from within Windows/Windows Explorer.

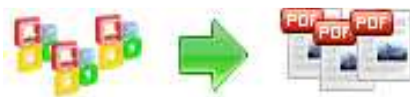


When you start the program, you will be presented with the primary screen.



Quick Convert Office Document(s) in Windows Explorer

Right click a Office Document(s) in windows explorer, select "Convert to PDF..." from context-sensitive menu popped up, and choose a name, then the A-PDF Office to PDF will convert the file to PDF quickly.



Using A-PDF Office to PDF in command line

A-PDF Office to PDF can be used in command line also.

Usage:

```
OfficeToPDF <input Office Document(s)> <output pdf file>
```

Return code:

- 1: Does not find GhostScrip
- 2: Input file does not exist
- 3: Output file path not exists
- 5: Source file is not Office Document(s) (.doc, .rtf, .txt, .xls, .ppt, .pub, .xml, .xsn, .vsd, .vdx etc)
- 6: Output file name error
- 8: Convert successfully
- 9: Convert Failed
- 10: Error because another office to PDF Application is running.

example:

```
OfficeToPDF "c:\help.doc" "c:\output\help.pdf"  
OfficeToPDF "c:\help.txt" "c:\output\help.pdf"  
OfficeToPDF "c:\help.rtf" "c:\output\help.pdf"  
OfficeToPDF "c:\table.xls" "c:\output\table.pdf"  
OfficeToPDF "c:\Product.ppt" "c:\output\Product.pdf"  
OfficeToPDF "c:\office2007.docx" "c:\output\office2007.pdf"  
OfficeToPDF "c:\card.pub" "c:\output\card.pdf"  
OfficeToPDF "c:\form.xml" "c:\output\form.pdf"  
OfficeToPDF "c:\form.xsn" "c:\output\form.pdf"  
OfficeToPDF "c:\logic.vsd" "c:\output\logic.pdf"  
OfficeToPDF "c:\visio.vxd" "c:\output\visio.pdf"
```

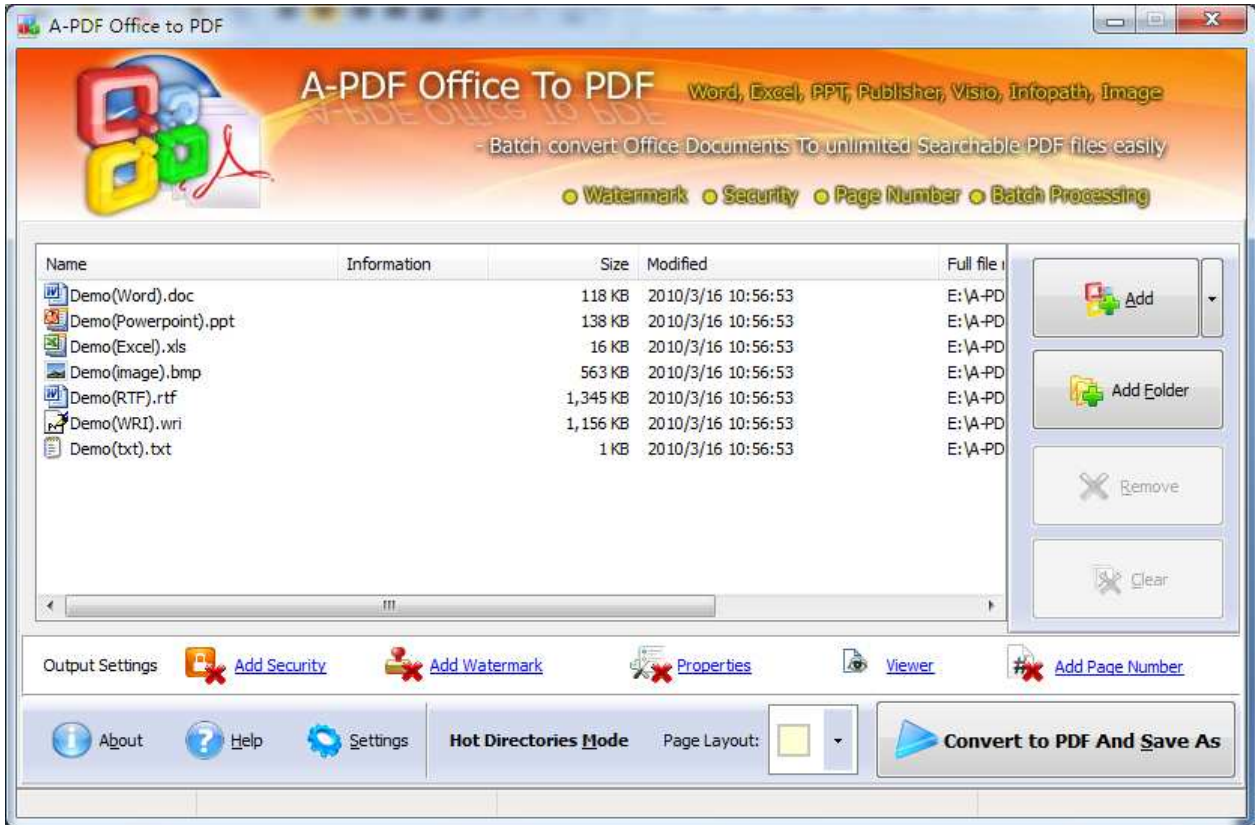
Batch Convert Mode

Select the option **Batch Convert Mode** and push the button **Next >**, an OFFICE TO PDF Batch Convert window will be opened.




PDF Office to PDF utility Convert Office to Searchable PDF


User Documentation



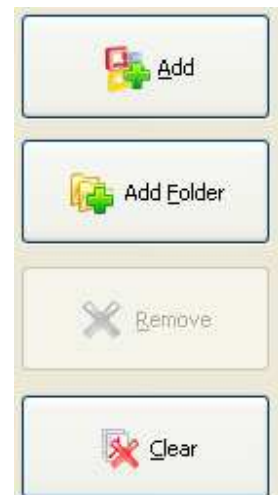
Selecting Files

Clicking the **Add** icon  then will open the standard file browse and select window. From that window you can navigate to the folder and find the files you want to add to the list of files to be worked.

Alternatively, if you are using Windows Explorer to locate files, you have the convenience of being able to 'drag and drop' files into the document window.

A-PDF Office to PDF even allows you to select all files in a particular directory/folder by using the **Add Folder**  button! Adding a directory also supports sub-folders.



Each added file is displayed in the document list window. You can





User Documentation

view any of the files in the window by 'double-clicking' them. That will open DOC files in your MS Office program.

You can click the **Remove** icon  to remove selected files in list or you can clear all Docs by clicking the **Clear** icon .

Convert to PDF And Save As

Click the **Convert to PDF And Save as** icon to convert all of Microsoft Office documents in the document windows to PDF and save the resultant file to a directory which you selected.



Hot Directories Mode

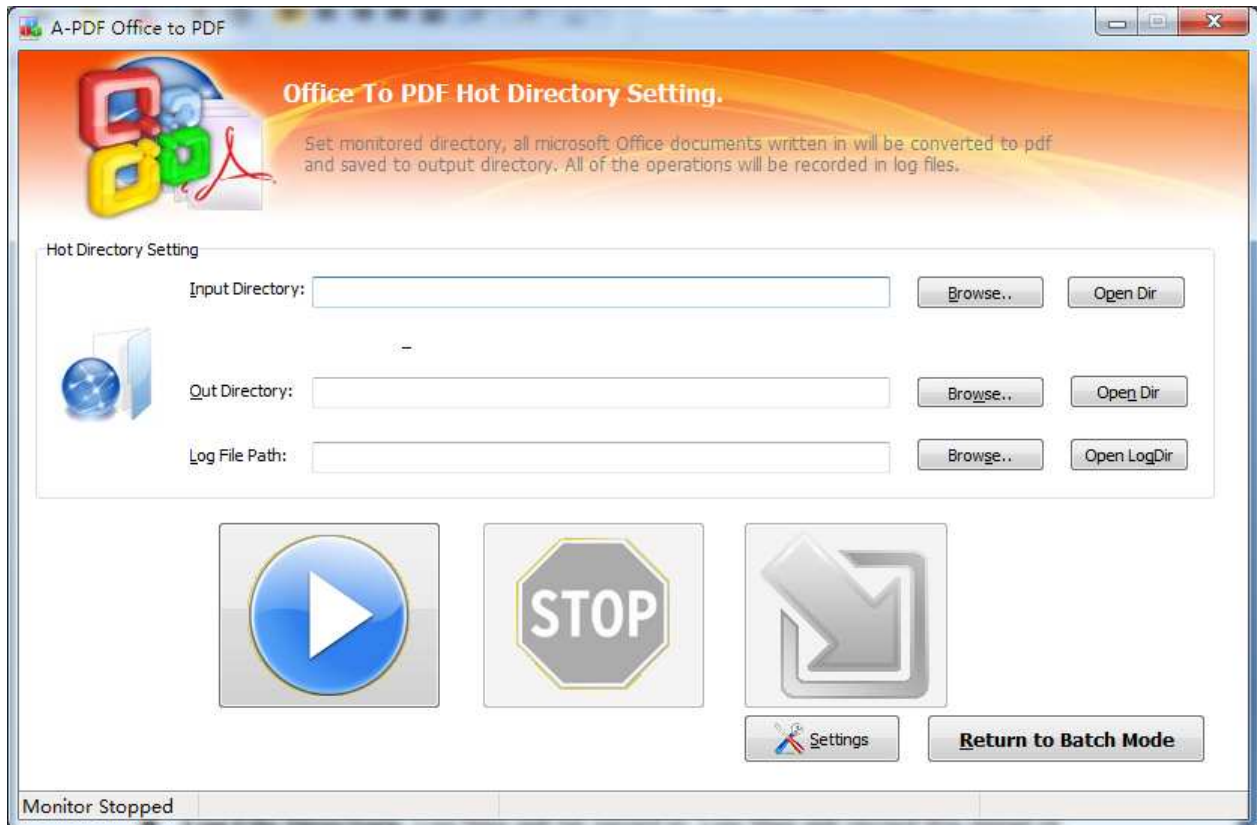
You may want to monitor a directory in a server, when some one copying the Office files in, the files will be converted to PDF and sent to an output directory automatically.

In A-PDF Office to PDF wizard window, select the option **Hot Directories Mode** and push the button **Next >**, a Hot Directories Service window will be opened.



PDF Office to PDF utility Convert Office to Searchable PDF

User Documentation



Hot Directory Setting:

- **Monitor Directory**, set the directory to monitor. Even **Include Sub-Directory**.
- **Output Directory**, set output directory where all of converted files will be sent to.
- **Log File Directory**, Log files will be saved in. Log files will record the detail of operation. Such as when to monitor, which file converted, if converting successfully or not.

After setting the directories, click **Start** button to start work, **Stop** button to stop monitoring hot directory.



Output Settings

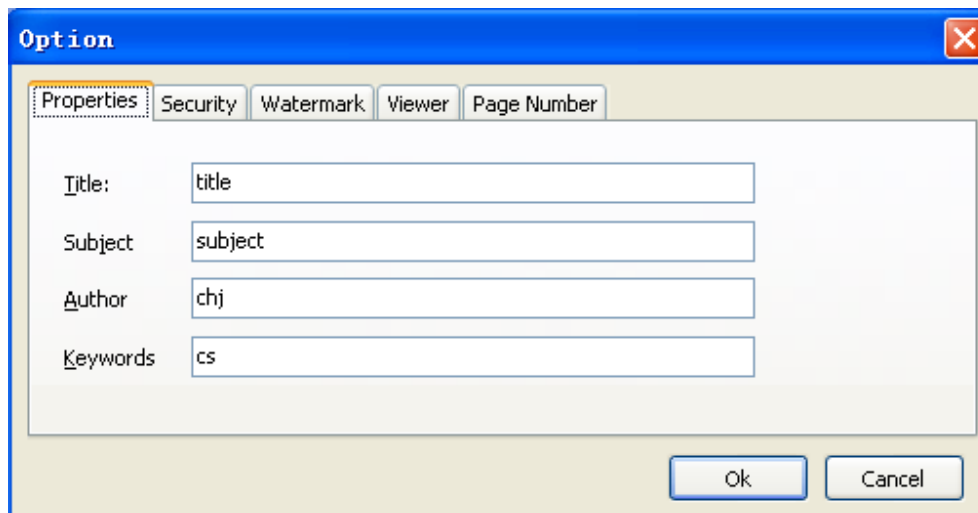
A-PDF Office to PDF allows you to undertake a number of special actions to apply to

your output document. Click the  icon.

This brings up a multi-tab list with options for accessing and changing your PDF document. You can edit the Properties, adjust Security settings (passwords, view/print permissions, etc.) in the document, Add Page Numbering to the Output document with complete control over where and how page numbering is displayed, as well as change the Output file's "view" layout.

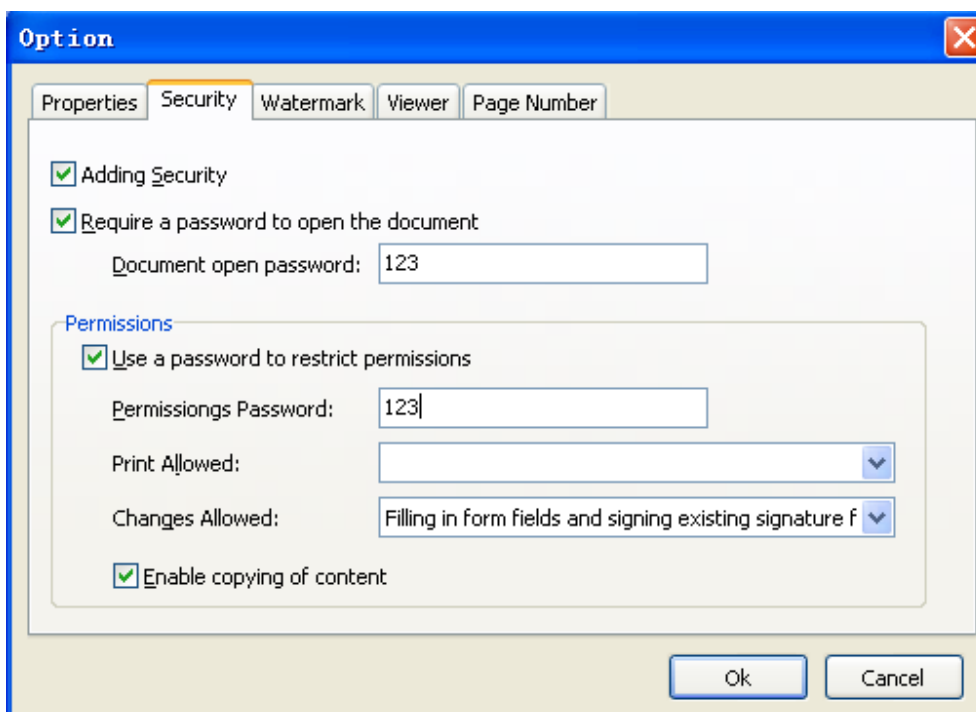
Option – Properties

The Properties changer allows you to add/edit Title, Subject, Author, and Keywords for the Output PDF document.



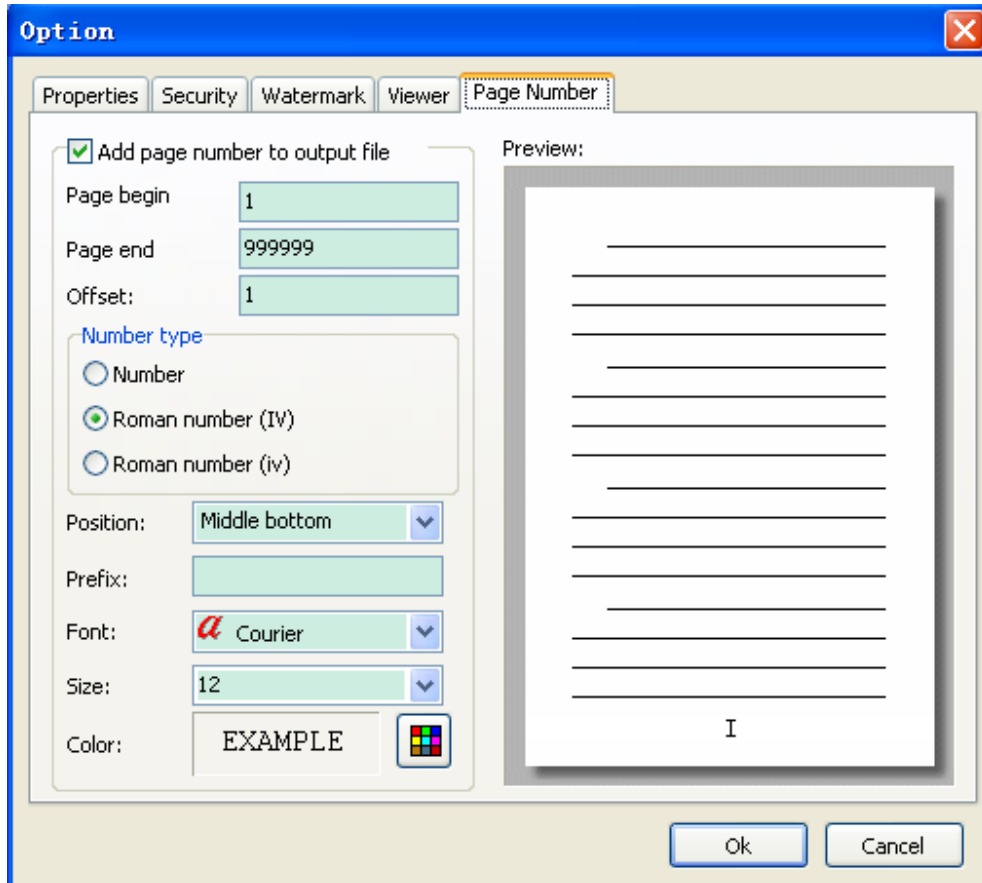
Option - Security

The Security options are self-guided and intuitively obvious making them very simple to use. In each case, check the uppermost checkbox to 'activate' the alternative selections on either tab.



Option - Page-Numbering

The page-numbering feature allows you to select how page numbering is added to output documents. Check the 'Add page number to output file' box, and you can make selections simply for your output document.

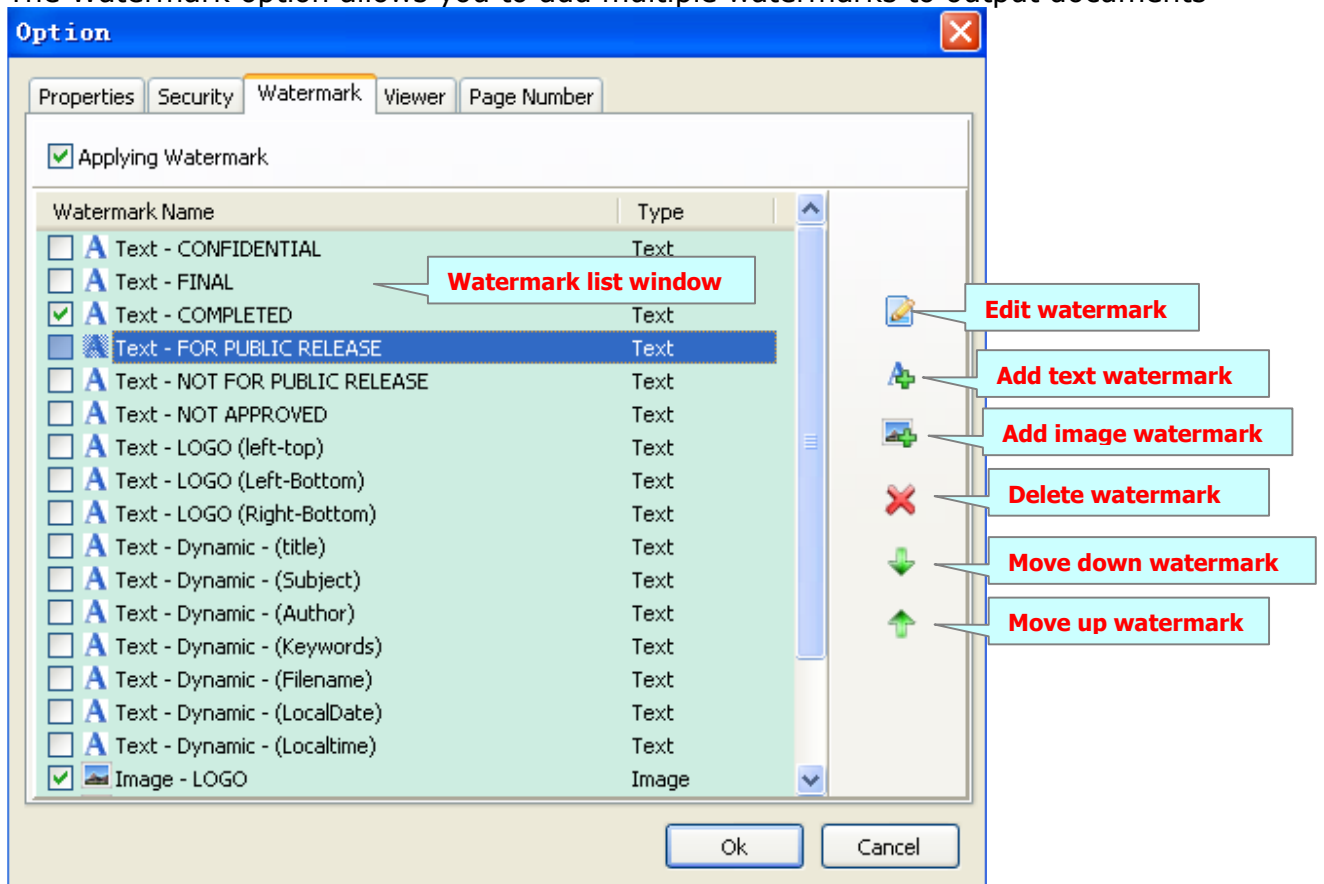


You can use any standard or .ttf font on your computer for displaying page numbers. The small live preview shows you how your selections will look before applying them. TrueType™ fonts will embed with your output PDF document.

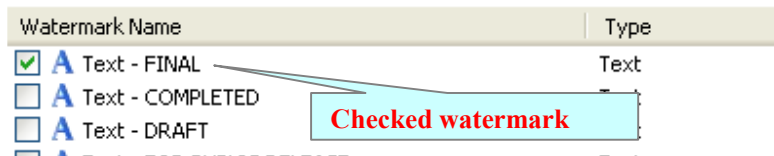


Option - Watermark

The Watermark option allows you to add multiple watermarks to output documents




The watermarks for applying to PDF(s) are listed in the Watermark list, where you can find text and image Watermark items list in here, You can apply watermark by marking one or multiple Watermark items checked, The watermark items which checked will to be applied to Output PDF(s)



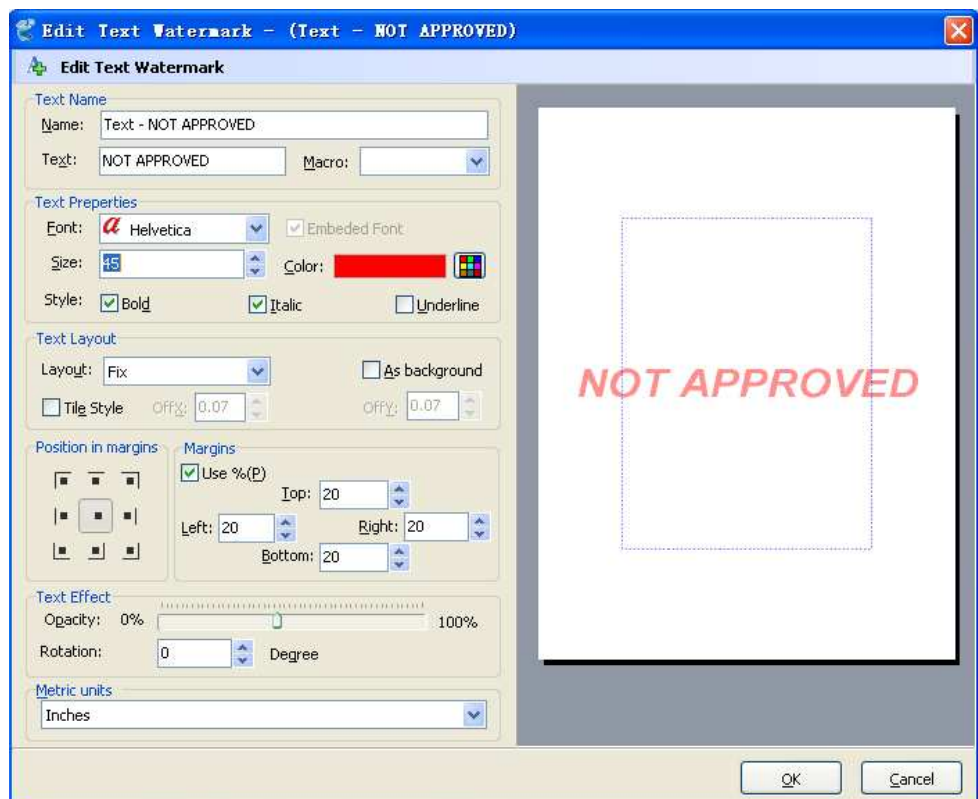


Create Text Watermark

In Watermark list window, Click the icon  to open the **New Text Watermark** configuration window. You can configure the text watermark properties here. Once you set the desired options for the text watermark, you can click **OK** to save it, Options that you can set:

Name - you can enter a name for the watermark (note this is not the text that will appear in the pdf, it's used only in the list of available watermarks that you see on the Watermarks list and must be a unique name).

Text - the text you enter here is actually the text that will appear as the PDF watermark. You can use macro to specify dynamic text, either select from the Macro list or input directly. As you type you will see in the Preview section how the watermark looks.



Text properties - You can select the type of the font (in the Font section), color, style (bold, italic, underline) and size of the text. If the font is true type, you have choice to embed the font or not.

Text Layout - If the Fit to margins options is selected the size of the font will be automatically adjusted to fit in the limits of the page margins. If the **As background** option is not checked, the text watermark will be placed on top of the content that currently exists in the document, otherwise it will be placed under the existing content. You can place the text to a fix position or tile in pages by check or uncheck **Tile style**



User Documentation

option. **Offx** means x-offset, **Offy** means y-offset. **Position** and **Margin** helps you to adjust the position of text watermark. The margin can use either inch/millimeter or percent as unit.

Text Effect – you can choose a rotation angle if you want the text to be rotated (Rotation, values accepted between 0 and 360) and set an Opacity value so that the text is transperence (values from 0 to 100). 0 means invisible, 100 means visible solid.

Preview - in this section you will be able to see how the text watermark will be displayed in the PDF file.

Now the text watermark has been defined and saved, it will be shown in the **Watermarks list window**.

Create Image Watermark

In Watermark list window, click the icon  to open the **New Image Watermark** configuration window. In here you can configure the image watermark properties.

Once you set the desired options for the image watermark, you can click **OK** to save it, Options that you can set:

Name - you can enter a name for the image watermark.

Image - You can browse and choose an image that will be used as the watermark. Image formats that can be recognized: .BMP, .GIF, .ICO, .JPG, .TIF, .JPEG, .JPE, .PBM, .PCX, .PNG, .PPM, .PSD, .TGA, .TGA etc. After you click ok you will see it in the Preview section.

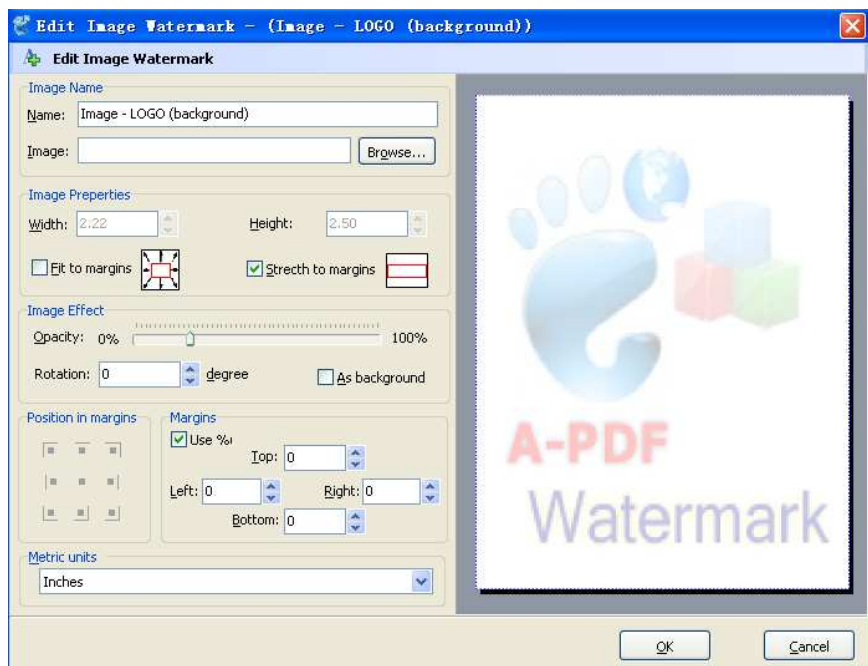


Image properties and margins - by default the **Fit to margin** are checked. The **Fit to margins** option will adjust automatically the image to fit in the limits of the page margins. If you uncheck the **Fit to margins** option you can enter custom dimensions



for your image (units for the dimensions are those selected in the Units drop-down includes inches, millimeters or points) and the image will be automatically adjusted as seen in the Preview section. The **Stretch to margins** option will adjust automatically the image to stretch in the limits of the page margins

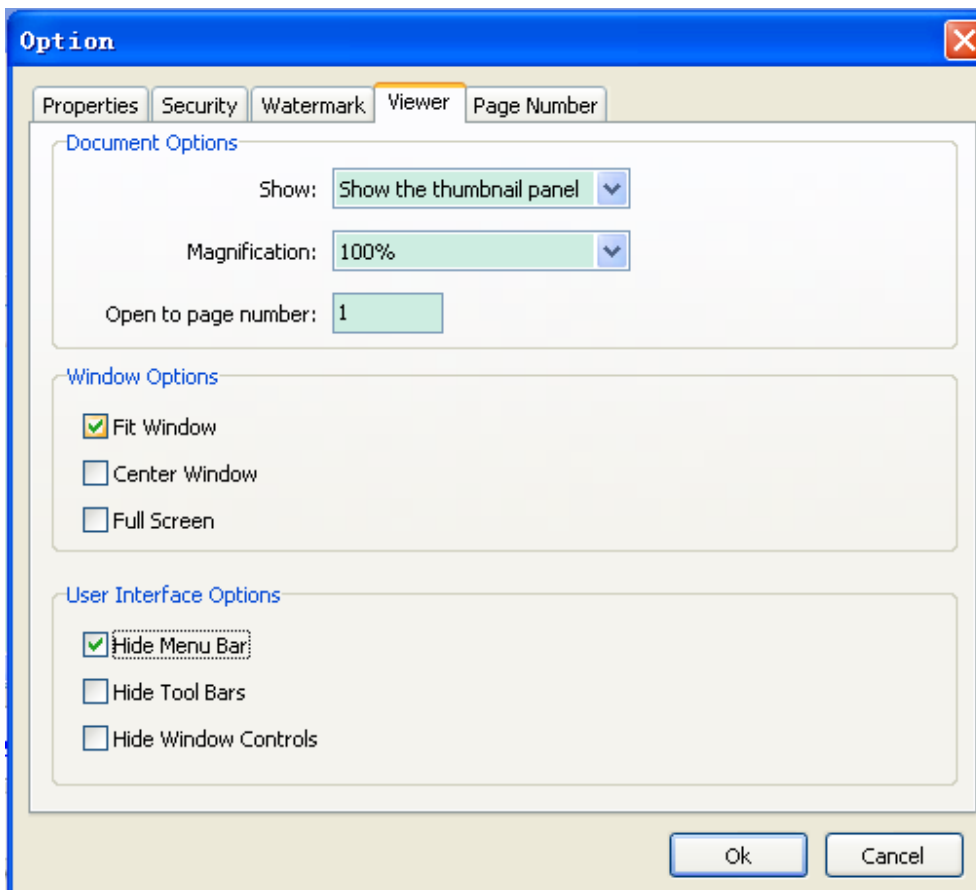
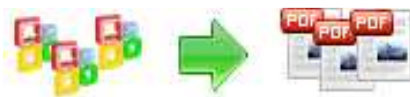
Image Effect - Using options in this section you can choose a rotation angle if you want the image to be rotated (Rotation, values accepted between 0 and 360) or set an Opacity value so that the image is not fully visible (values from 0 to 100).

Preview - in this section you will be able to see how the image watermark will be displayed in the PDF file.

Now the image watermark has been defined and saved. It will be shown in the **Watermarks list window**.

Option - Viewer

The Viewer option allows you to set various parameters as the defaults to be used when your output pdf is viewed. Use the dropdowns to set the document options, and the checkboxes to choose window and interface options to completely customize how your output document first appears when opened.



Ending Your Session

When you have completed your work click the **Quit** icon to exit program.

For more information: <http://www.a-pdf.com>