



## A-PDF Excel to PDF utility

User Documentation

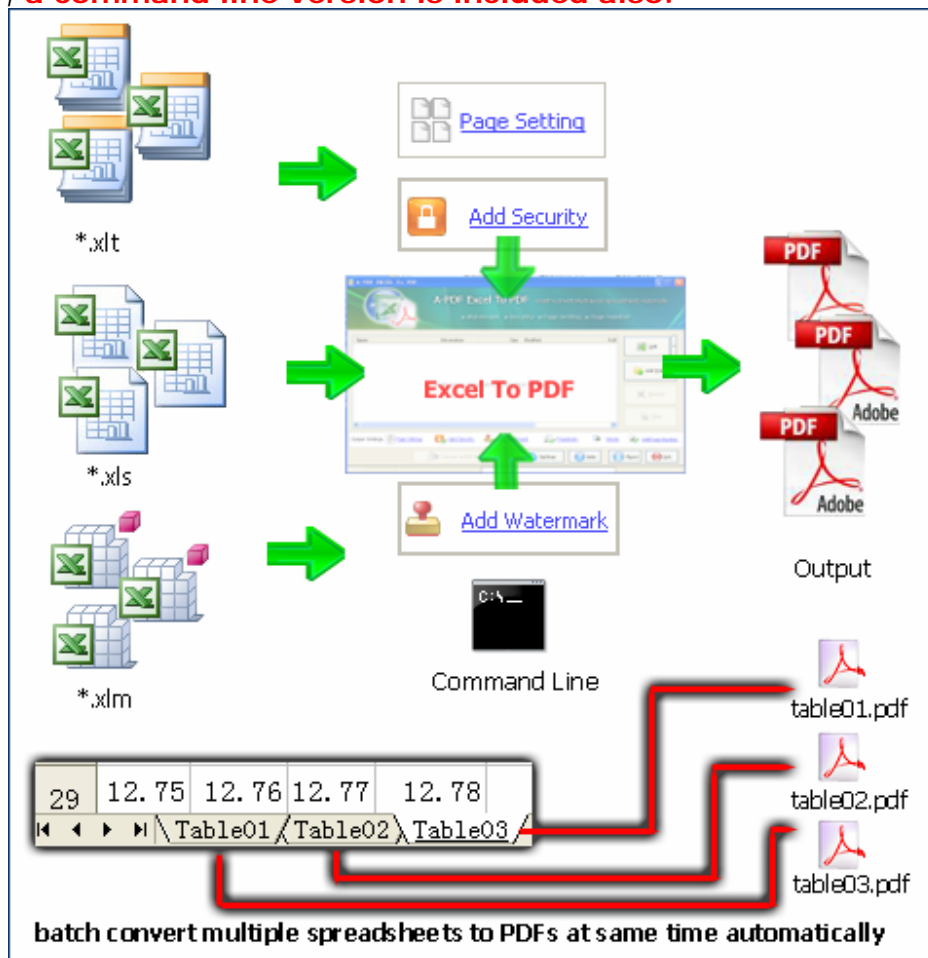
**Note: This product is distributed on a 'try-before-you-buy' basis. All features described in this documentation are enabled. The registered version does not insert a watermark in your generated pdf documents.**

### About A-PDF Excel to PDF

A-PDF Excel to PDF is a fast, affordable way to **batch** convert Microsoft Excel document into professional-quality documents in the popular PDF file format. Its easy-to-use interface allows you to batch create PDF files which can be viewed on any computer with a PDF viewer. A-PDF EXCEL to PDF supports Font embedding, Adding watermark, Security, Page Number, compression and multi-language.

**A convenience feature is that it can batch convert multiple spreadsheets to single PDF or multiple PDFs at same time automatically**

A-PDF Excel to PDF Running in GUI and keeps running in batch mode (as command-line utility), **a command line version is included also.**





# A-PDF Excel to PDF utility

## User Documentation

Example:

measure*	non-parametric	parametric
theta0	0.912	0.929
d0	0.390	(0.26, 0.49) (0.284, 0.4)
IR	0.144	(0, 0.381) 0.143 (0, 0.368)
upper limit	0.491	(0.376, 0.6) 0.373 (0.341, 0.405)
lower limit	0.347	(0.226, 0.4) 0.230 (0.037, 0.423)
VRP	0.945	(0.855, 1) 0.946 (0.86, 1)

Development

Update/Patch

Production/Release

Review 1

Review n

Check in

QA

Release

Post release

Capital Income

Dividends

### MS Excel

### Converted PDF

A-PDF Excel to PDF lets you instantly convert Microsoft Excel into fully-formatted and professional-quality PDF file format. Support Microsoft Excel 97, 2000, xp or higher.

A-PDF Excel to PDF retains the layout of the original Excel document, and it supports all PDF file settings, such as PDF Compatibility, Auto-Rotate, Resolution, Compress settings of PDF document, Colors settings of PDF document, Fonts settings of PDF document.

Simply drag and drop. Easily **batch** convert Microsoft Excel into PDFs from your documents.

### Feature

- Batch**  
 Converting Microsoft Excel into PDF normal files couldn't be any easier. Simply Drag the Excel files to the file list which you want to convert into PDF file and



## A-PDF Excel to PDF utility

### User Documentation

---

click the "Convert to PDF And Save as" button, A-PDF Excel to PDF quickly re-creates your Excel file as a fully formatted PDF files.

- **Fast**  
Get the job done in seconds or minutes, not hours or days. A-PDF Excel to PDF eliminates the need to re-key and re-format PDF documents, saving you both time and money.
- **Accurate**  
You will be amazed at the results you get from Excel to PDF Converter. It accurately retains the layout of the original Excel file. Converts text in over 100 languages and separates graphics from tables and text.
- **Powerful.**  
Now you can do more than view PDF files. Document Format (PDF) is the fact standard for the secure and reliable distribution and exchange of electronic documents and forms around the world, and now you can convert any Excel into professional-quality PDF file format only by one click.

A-PDF Excel to PDF does NOT require Adobe Acrobat, and produces documents compatible with Adobe Acrobat Reader Version 5 and above.



Before use A-PDF Excel to PDF, Microsoft Excel 97 or higher Version must be installed.

### Using A-PDF Excel to PDF

A-PDF Excel to PDF can be started either by launching the application via a desktop shortcut, or directly from within Windows/Windows Explorer.

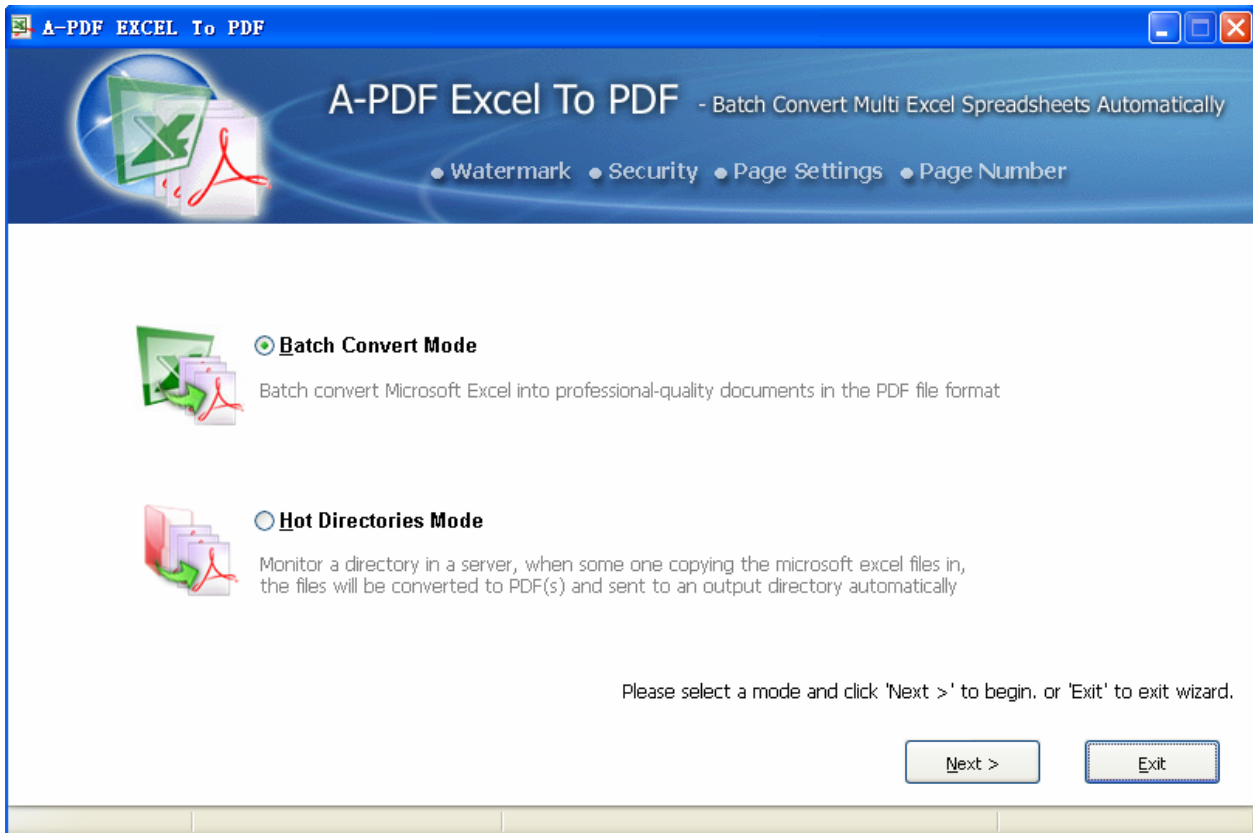


When you start the program, you will be presented with the primary screen.



## A-PDF Excel to PDF utility

### User Documentation



### Quick Convert Excel File in Windows Explorer

Right click an Excel file in windows explorer, select "Convert to PDF..." from context-sensitive menu popped up, and choose a name, then the A-PDF Excel to PDF will convert the file to PDF quickly.

### Using A-PDF Excel to PDF in command line

A- PDF Excel to PDF can be used in command line also.

#### Usage:

```
ExcelToPDF <input Excel file> <output pdf file>
Return code:
1: Does not find GhostSscript
2: Input file does not exist
3: Output file path not exists
5: Source file is not word file (.xls, .xlt, .xlm etc)
6: Output file name error
8: Convert successfully
9: Convert Failed
```



## A-PDF Excel to PDF utility

### User Documentation

```
10: Error because another A-PDF Excel to PDF is running.  
An example:  
ExcelToPDF "c:\table.xls " "c:\output\table.pdf"
```


### Batch Convert Mode

Select the option **Batch Convert Mode** and push the button **Next >**, a EXCEL TO PDF Batch Convert window will be opened.








### Selecting Files

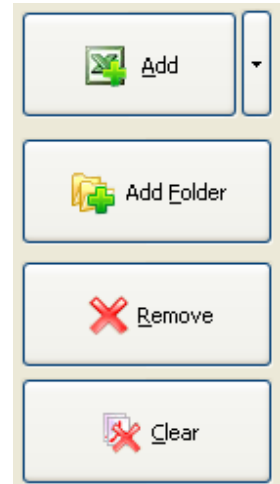
Clicking the **Add** icon  then will open the standard file browse and select window. From that window you can navigate to the folder and find the files you want to add to the list of files to be worked.

Alternatively, if you are using Windows Explorer to locate files, you have the convenience of being able to 'drag and drop' files into the document window.

A-PDF Excel to PDF even allows you to select all files in a particular directory/folder by using the **Add Folder**  button! Adding a directory also supports sub-folders.

Each added file is displayed in the document list window. You can view any of the files in the window by 'double-clicking' them. That will open Excel files in your MS Excel program.

You can click the **Remove** icon  to remove selected files in list or you can clear all Docs by clicking the **Clear** icon .



### Convert to PDF And Save As

Click the **Convert to PDF And Save as** icon to convert all of Microsoft Excel in the document windows to PDF and save the resultant file to a directory which you selected.



### Hot Directories Mode

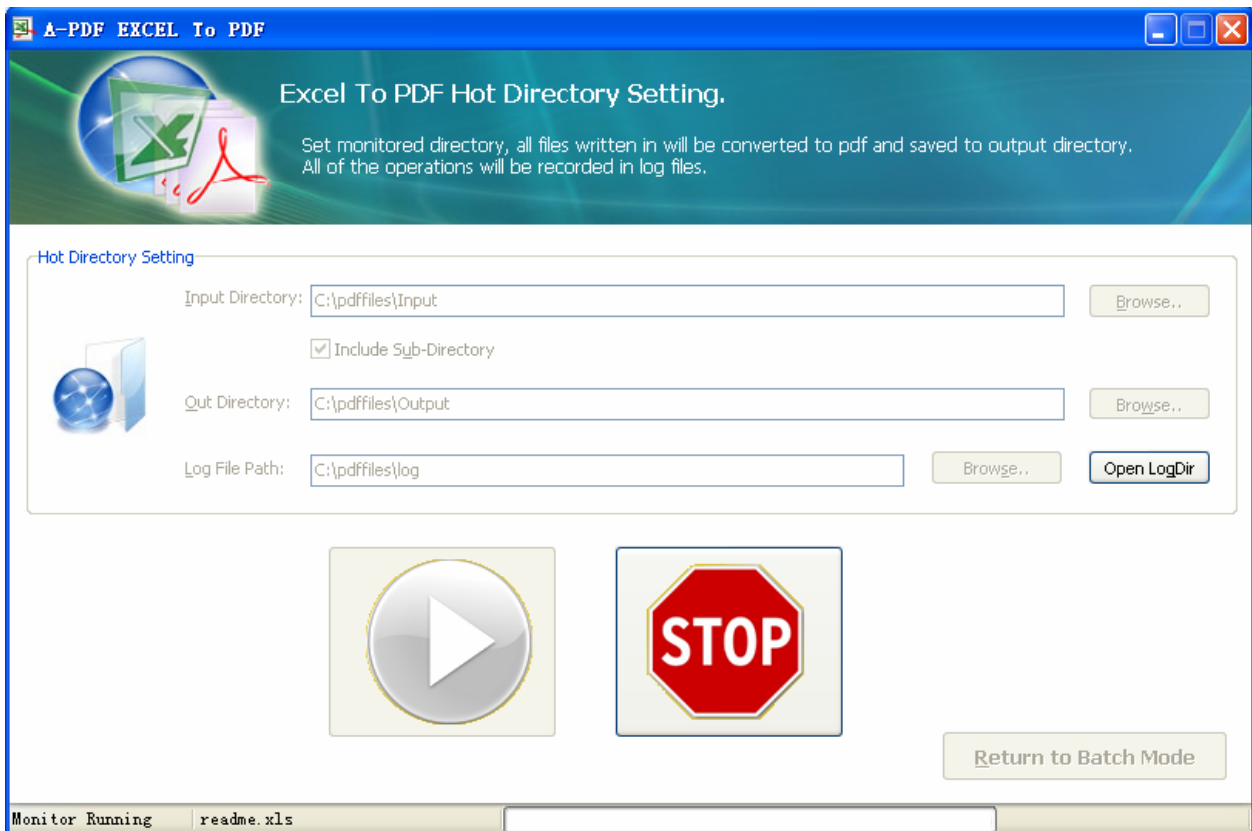
You may want to monitor a directory in a server, when some one copying the Excel files in, the files will be converted to PDF and sent to an output directory automatically.

In A-PDF Excel to PDF wizard window, select the option **Hot Directories Mode** and push the button **Next >**, a Hot Directories Service window will be opened.



## A-PDF Excel to PDF utility

### User Documentation



Hot Directory Setting:

- **Monitor Directory**, set the directory to monitor. Even **Include Sub-Directory**.
- **Output Directory**, set output directory where all of converted files will be sent to.
- **Log File Directory**, Log files will be saved in. Log files will record the detail of operation. Such as when to monitor, which file converted, if converting successfully or not.

After setting the directories, click **Start** button to start work, **Stop** button to stop monitoring hot directory.

### Output Settings

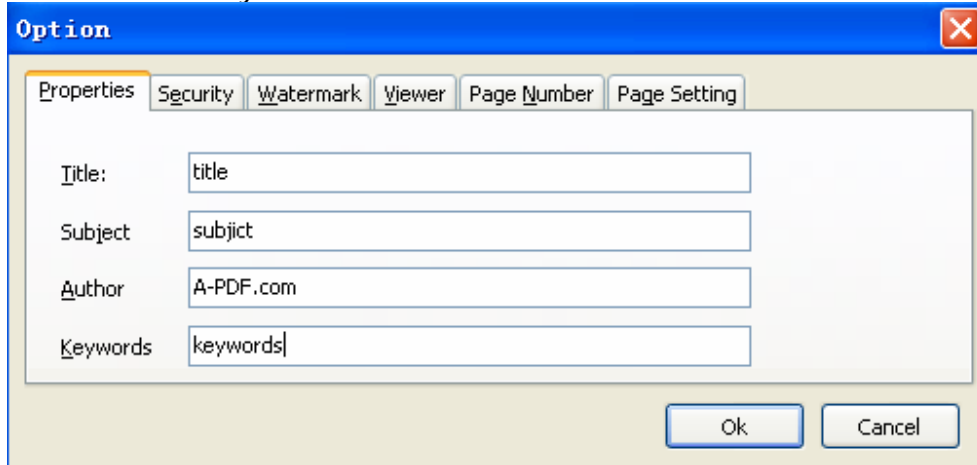
A-PDF EXCEL To PDF allows you to undertake a number of special actions to apply to

your output document. Click the  icon.

This brings up a multi-tab list with options for accessing and changing your PDF document. You can edit the Properties, adjust Security settings (passwords, view/print

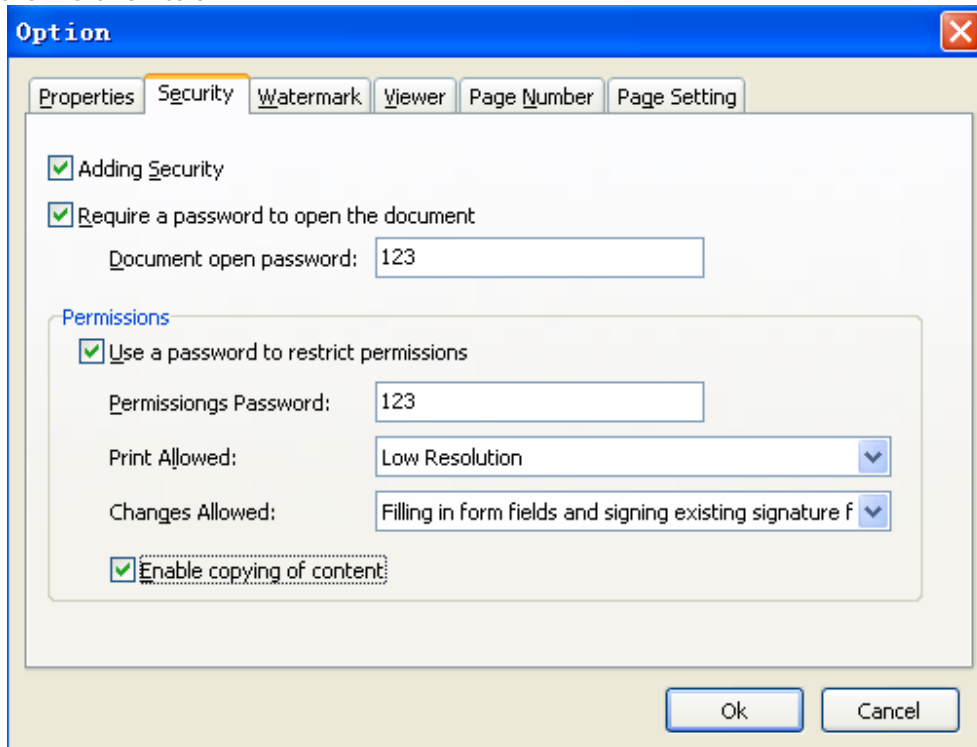


permissions, etc.) in the document, Add Page Numbering to the Output document with complete control over where and how page numbering is displayed, as well as change the Output file's "view" layout.



### Option - Security

The Security options are self-guided and intuitively obvious making them very simple to use. In each case, check the uppermost checkbox to 'activate' the alternative selections on either tab.

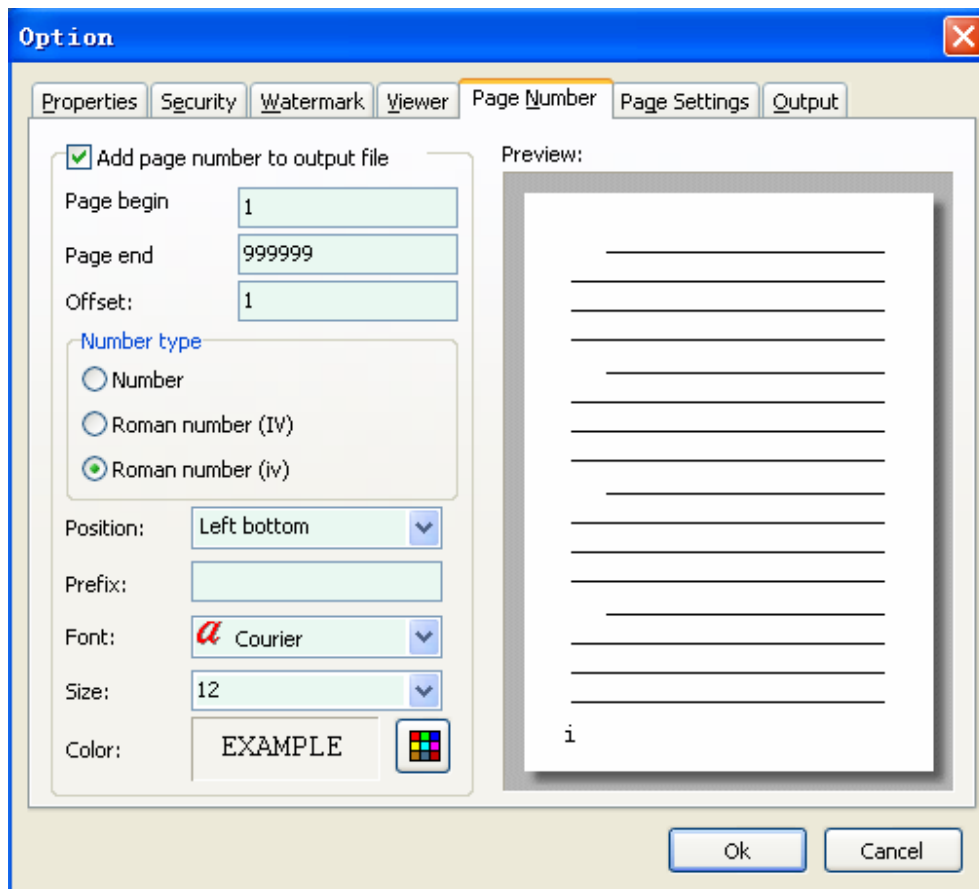






### Option - Page-Numbering

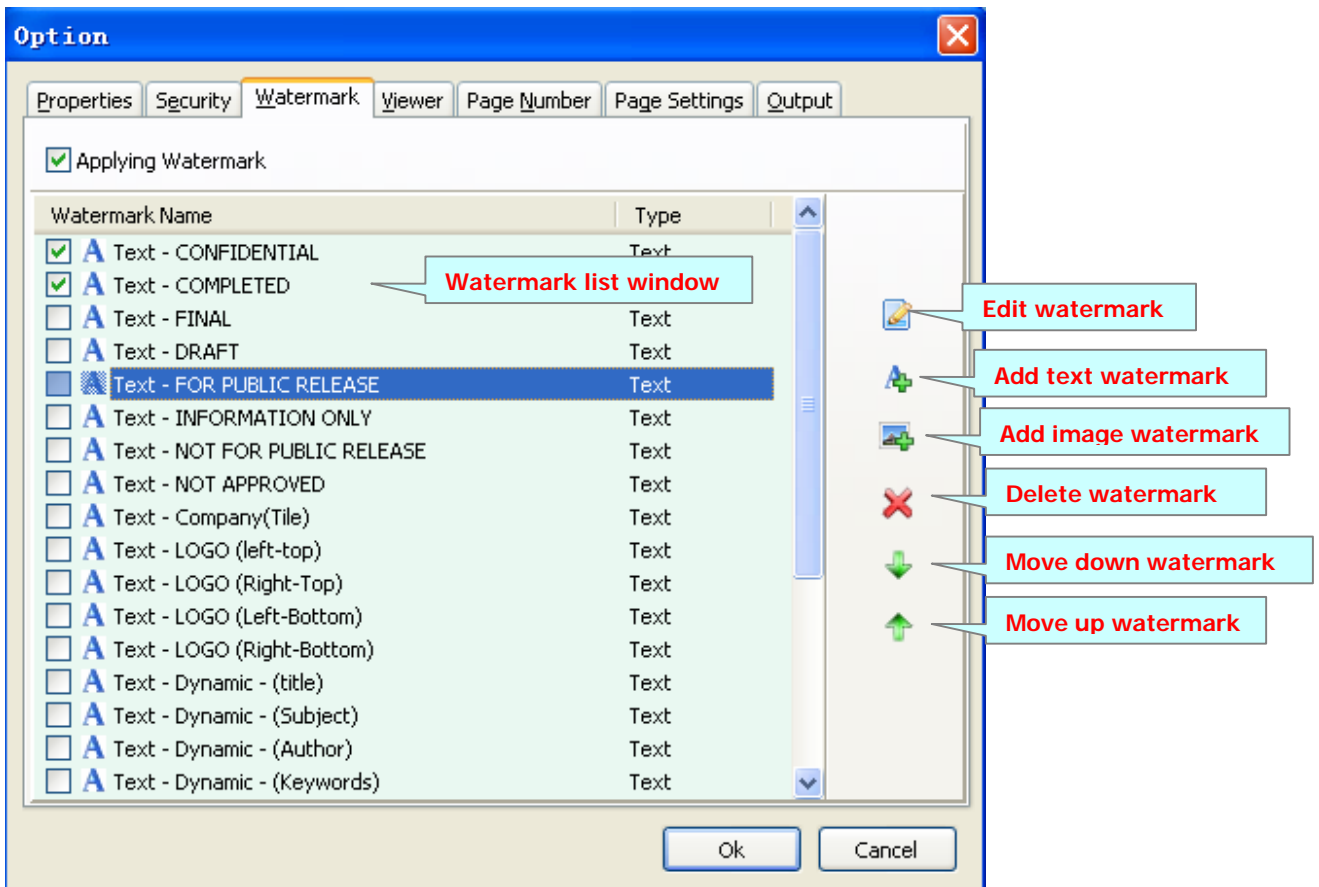
The page-numbering feature allows you to select how page numbering is added to output documents. Check the 'Add page number to output file' box, and you can make selections simply for your output document.



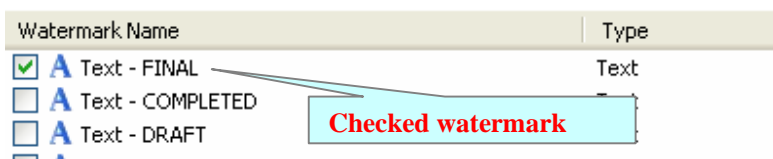
You can use any standard or .ttf font on your computer for displaying page numbers. The small live preview shows you how your selections will look before applying them. TrueType™ fonts will embed with your output PDF document.

### Option - Watermark


The Watermark option allows you to add multiple watermarks to output documents



The watermarks for applying to PDF(s) are listed in the Watermark list, where you can find text and image Watermark items list in here, You can apply watermark by marking one or multiple Watermark items checked, The watermark items which checked will to be applied to Output PDF(s)



### Create Text Watermark

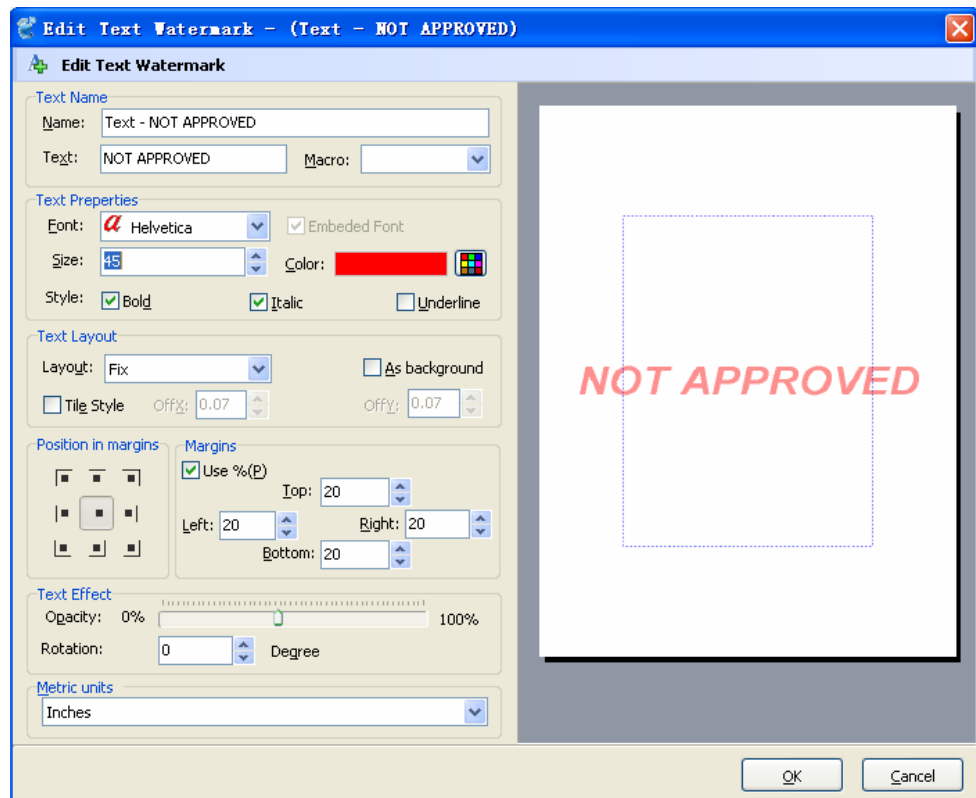
In Watermark list window, Click the icon  to open the **New Text Watermark** configuration window. You can configure the text watermark properties here. Once



you set the desired options for the text watermark, you can click OK to save it, Options that you can set:

**Name** - you can enter a name for the watermark (note this is not the text that will appear in the pdf, it's used only in the list of available watermarks that you see on the Watermarks list and must be a unique name).

**Text** - the text you enter here is actually the text that will appear as the PDF watermark. You can use macro to specify dynamic text, either select from the Macro list or input directly. As you type you will see in the Preview section how the watermark looks.



**Text properties** - You can select the type of the font (in the Font section), color, style (bold, italic, underline) and size of the text. If the font is true type, you have choice to embed the font or not.

**Text Layout** - If the Fit to margins options is selected the size of the font will be automatically adjusted to fit in the limits of the page margins. If the **As background** option is not checked, the text watermark will be placed on top of the content that currently exists in the document, otherwise it will be placed under the existing content. You can place the text to a fix position or tile in pages by check or uncheck **Tile style** option. **Offx** means x-offset, **Offy** means y-offset. **Position** and **Margin** helps you to adjust the position of text watermark. The margin can use either inch/millimeter or percent as unit.


**Text Effect** – you can choose a rotation angle if you want the text to be rotated (Rotation, values accepted between 0 and 360) and set an Opacity value so that the text is transparency (values from 0 to 100). 0 means invisible, 100 means visible solid.



**Preview** - in this section you will be able to see how the text watermark will be displayed in the PDF file.

Now the text watermark has been defined and saved, it will be shown in the **Watermarks list window**.

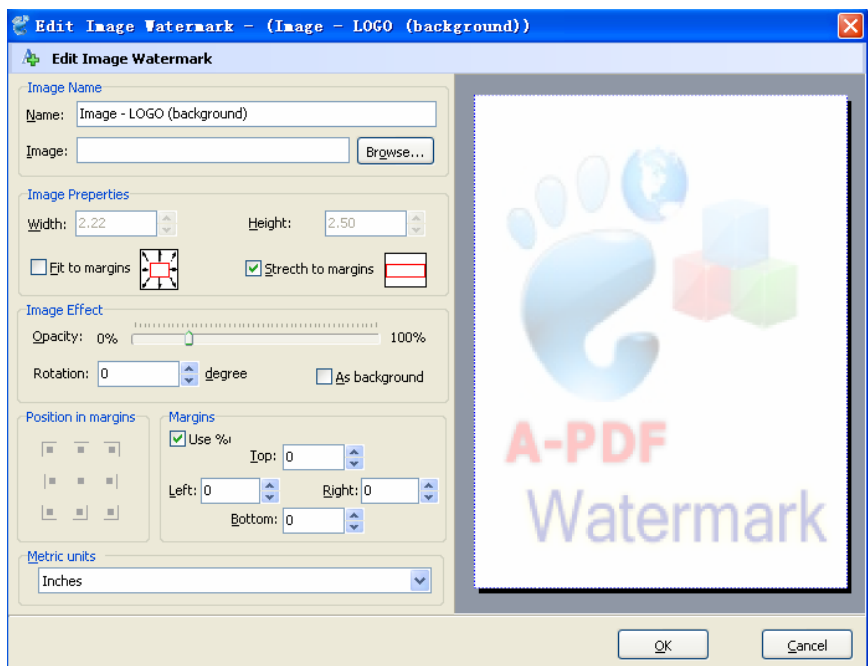
### Create Image Watermark

In Watermark list window, click the icon  to open the **New Image Watermark** configuration window. In here you can configure the image watermark properties.

Once you set the desired options for the image watermark, you can click **OK** to save it, **Options** that you can set:

**Name** - you can enter a name for the image watermark.

**Image** - You can browse and choose an image that will be used as the watermark. Image formats that can be recognized: .BMP, .GIF, .ICO, .JPG, .TIF, .JPEG, .JPE, .PBM, .PCX, .PNG, .PPM, .PSD, .TGA, .TGA etc. After you click ok you will see it in the Preview section.



**Image properties and margins** - by default the **Fit to margin** are checked. The **Fit to margins** option will adjust automatically the image to fit in the limits of the page margins. If you uncheck the **Fit to margins** option you can enter custom dimensions for your image (units for the dimensions are those selected in the Units drop-down includes inches, millimeters or points) and the image will be automatically adjusted as seen in the Preview section. The **Stretch to margins** option will adjust automatically the image to stretch in the limits of the page margins

**Image Effect** - Using options in this section you can choose a rotation angle if you want the image to be rotated (Rotation, values accepted between 0 and 360) or set an Opacity value so that the image is not fully visible (values from 0 to 100).

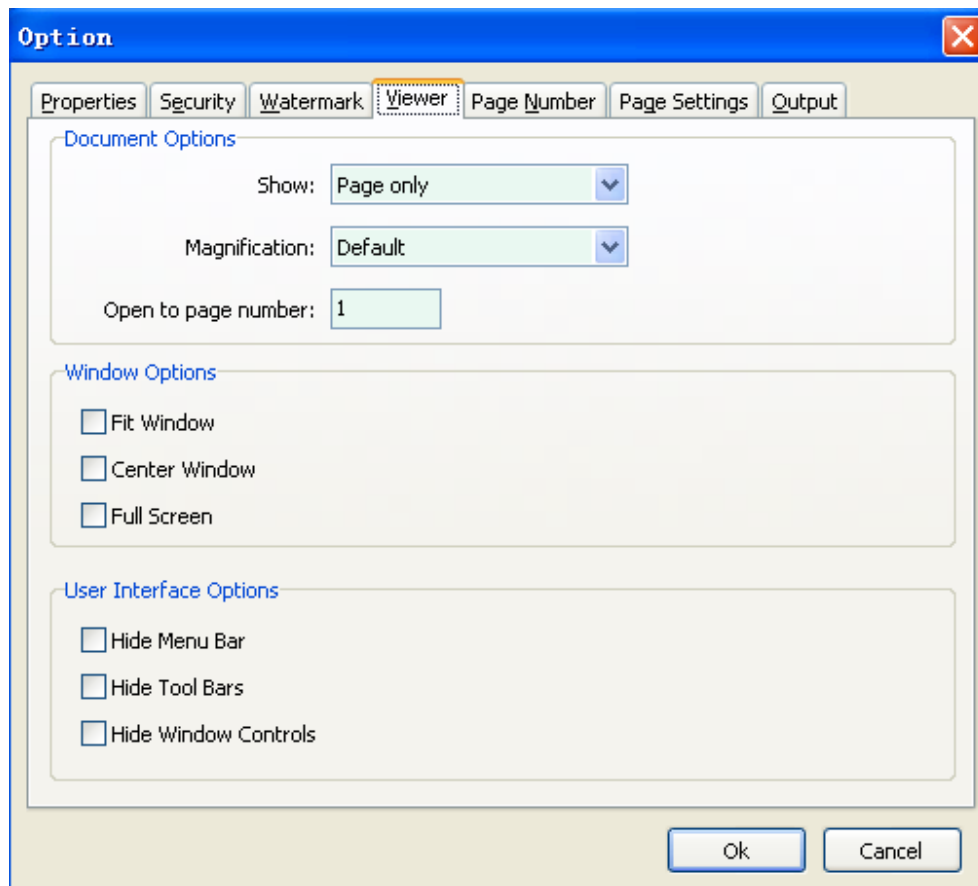


**Preview** - in this section you will be able to see how the image watermark will be displayed in the PDF file.

Now the image watermark has been defined and saved. It will be shown in the **Watermarks list window**.

### Option - Viewer

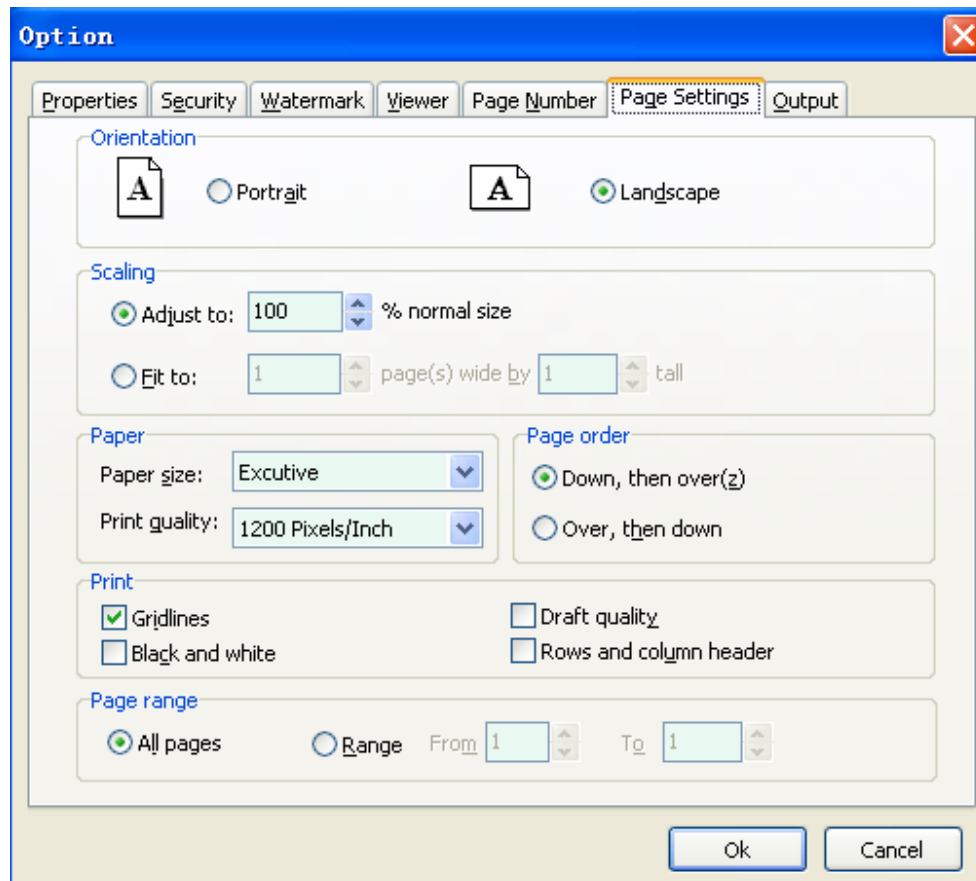
The Viewer option allows you to set various parameters as the defaults to be used when your output pdf is viewed. Use the dropdowns to set the document options, and the checkboxes to choose window and interface options to completely customize how your output document first appears when opened.



### Option – Page Setting



The Page setting option allows you to set output PDF documents pages size, orientation, page layout, slide pages range for converting, output color mode, etc...



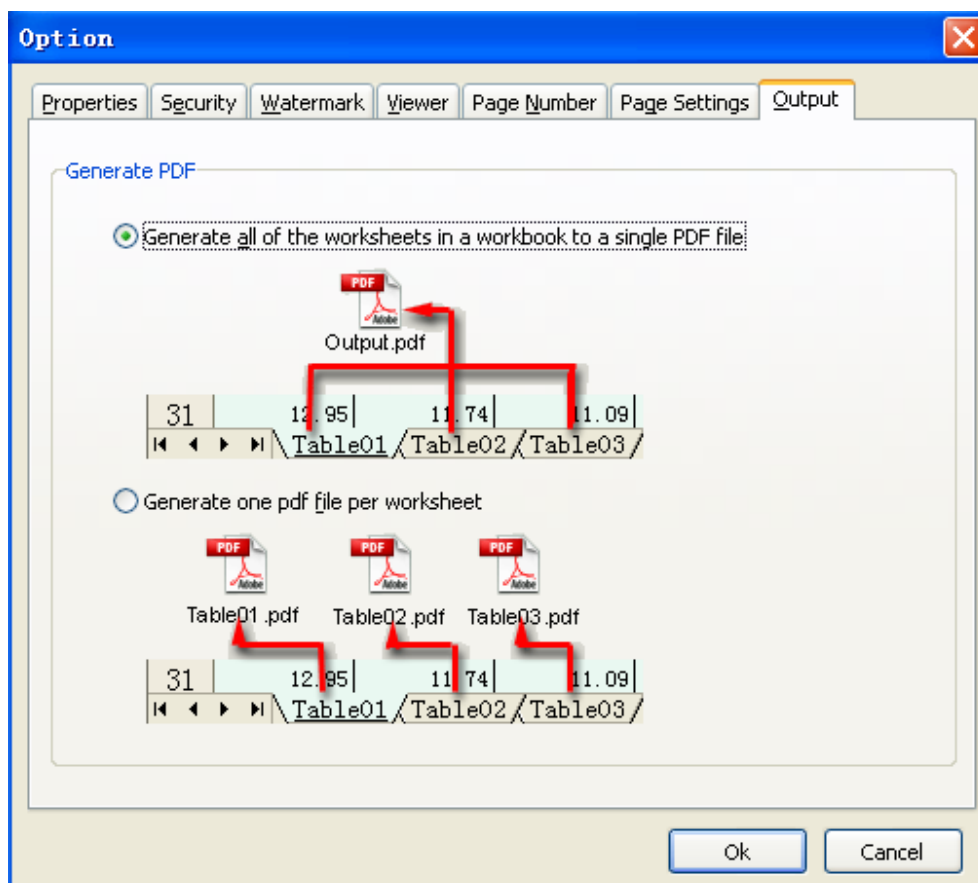
- **Page Orientation** – Allows you to print sheets sideways (Landscape view). Very useful for spreadsheets that are just a bit too wide to print using the default portrait view.
- **Scaling** – Allows you to adjust the size of the worksheet you are printing. Most often used for shrinking an Excel worksheet to fit on fewer sheets or magnifying a small worksheet to make it easier to read.
- **Paper Size and Print Quality**
- **Paper size** – is adjusted most often to accommodate larger worksheets such as changing from the default letter size (8 ½ X 11 inches) to legal size (8 ½ X 14 inches).



- **Print quality** – has to do with the number of dots per inch (dpi) of ink that are used in printing a page. The higher the dpi number, the higher the quality the print job will be.
- **Print-** The most commonly used options are - Draft quality – Prints a quick, low quality draft copy; Gridlines – For printing the worksheet gridlines – making it easier to read data on larger worksheets; Row and column headings – Prints the row numbers and the column letters down the side and across the top of a each worksheet.
- **Page order** – Changes the order for printing pages on a multiple page spreadsheet. Normally Excel prints down the worksheet. If you change the option, it will print across.

### Option – Output

The **Output** setting option allows you to choice generate all of the worksheets to a single PDF file or generate only one pdf file per worksheet in an Excel Workbook





### Ending Your Session

When you have completed your work click the **Quit** icon to exit program.

For more information: <http://www.a-pdf.com>